

# QuickPro Canvas Instructions

Adventa®

## What you will need:

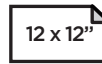


STAPLER  
REQUIRED

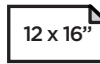


SCISSORS  
REQUIRED

## Sizes available:



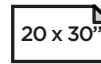
QPC1212



QPC1216



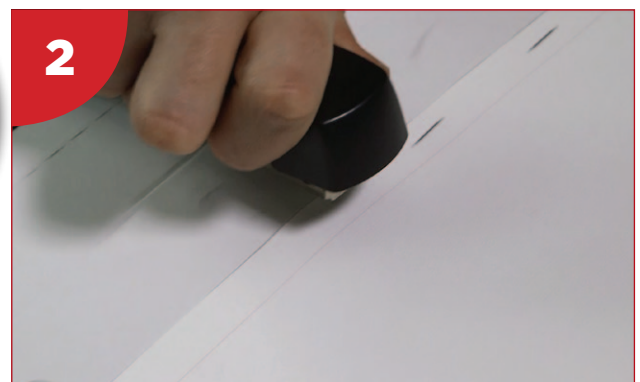
QPC1620



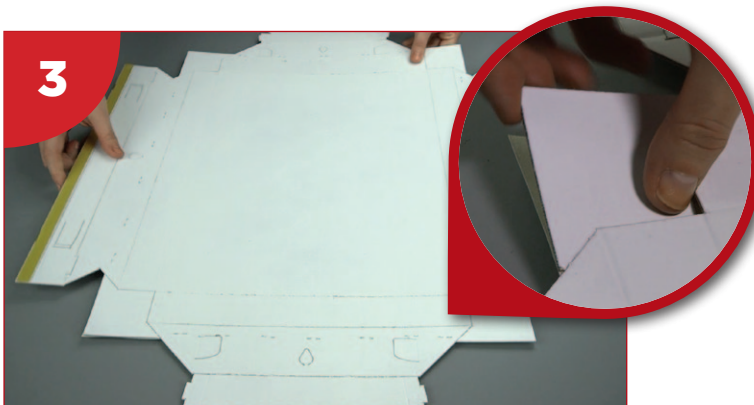
QPC2030



1 First, print your design into one of our pre-set templates. Place the QuickPro canvas adhesive side down and align canvas – square up with the corner guidance tabs.



2 Holding in position staple along the edge of each side, close to the edge of the canvas, avoiding the 4 locking tabs.



3 Turnover and detach the corner guidance tabs.



4 Cut diagonally across each corner leaving a 3mm or 1/8 inch gap.



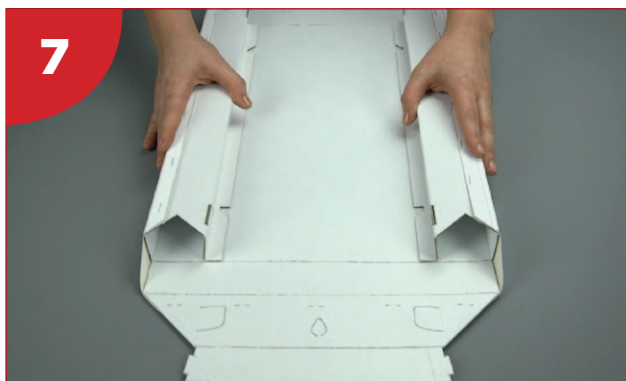
5 Pre crease the folds, then remove the adhesive strips on the two sides and fold back on its self at the MIDDLE crease.



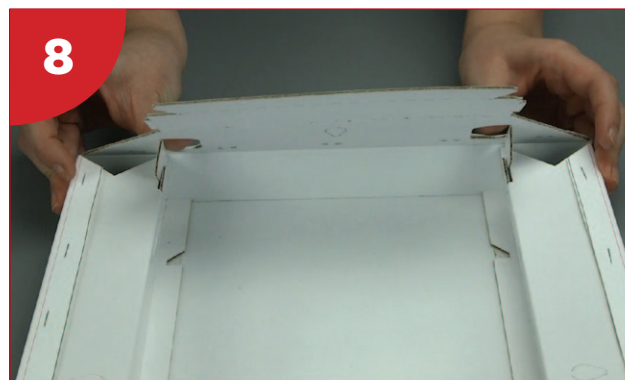
6 Push down sides ensuring they are flat and press adhesive firmly. Repeat on the opposite side.

# QuickPro Canvas Instructions

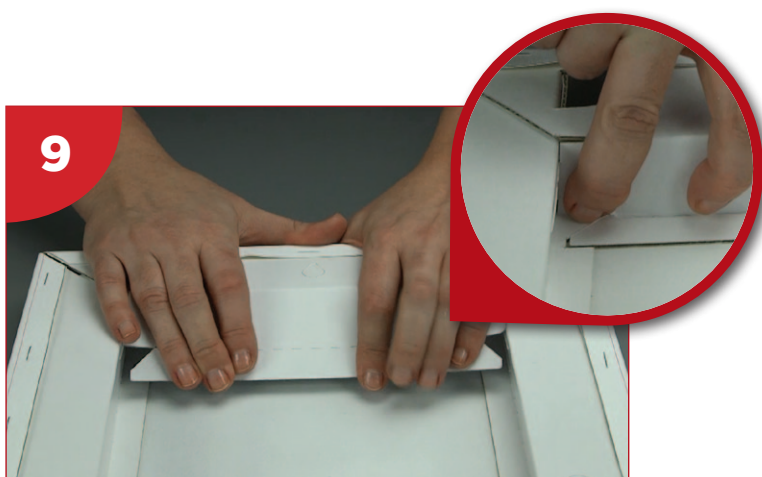
Adventa®



Lift up sides to form the channels.



Now lift one end upwards creating the canvas at the corner. Push tabs inwards and carefully line-up the location tabs into channels slots.



Press down, (checking you're happy with your corners) hold in place and then roll inner frame edge downwards, clicking locking tabs into position.

Damhead Way  
Dales Industrial Estate  
Peterhead  
AB42 3JF

TEL: 01779 470606  
EMAIL: [info@ashgrovetrading.com](mailto:info@ashgrovetrading.com)  
WEB: [www.ashgrovetrading.com](http://www.ashgrovetrading.com)



Repeat on the opposite side and you're done!

  
ashgrove  
YOU START WE'LL FINISH

PRESENTATION - PACKAGING  
PAPER - PRINT FINISHING

Scan this code to  
watch the video.

