

QuickPro Canvas Instructions

Adventa®

What you will need:

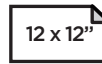


STAPLER
REQUIRED

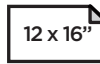


SCISSORS
REQUIRED

Sizes available:



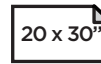
QPC1212



QPC1216



QPC1620



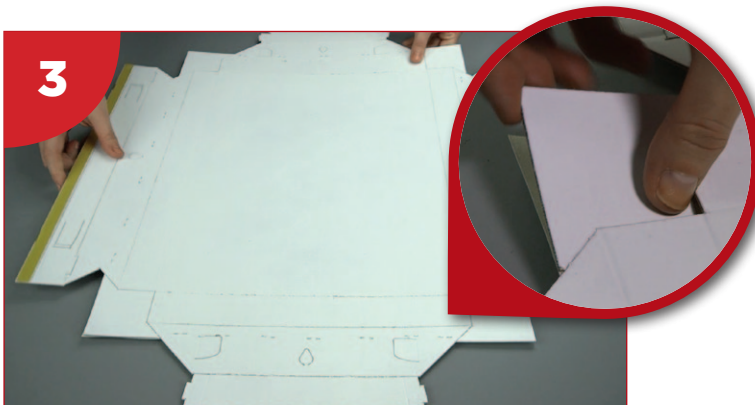
QPC2030



1 First, print your design into one of our pre-set templates. Place the QuickPro canvas adhesive side down and align canvas – square up with the corner guidance tabs.



2 Holding in position staple along the edge of each side, close to the edge of the canvas, avoiding the 4 locking tabs.



3 Turnover and detach the corner guidance tabs.



4 Cut diagonally across each corner leaving a 3mm or 1/8 inch gap.



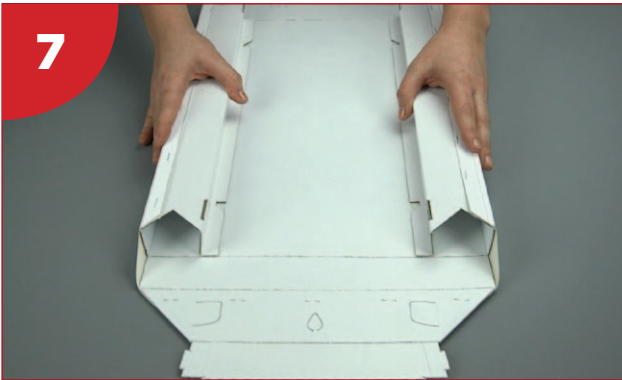
5 Pre crease the folds, then remove the adhesive strips on the two sides and fold back on its self at the MIDDLE crease.



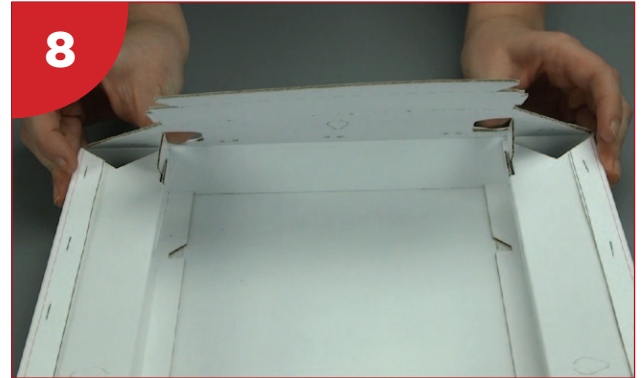
6 Push down sides ensuring they are flat and press adhesive firmly. Repeat on the opposite side.

QuickPro Canvas Instructions

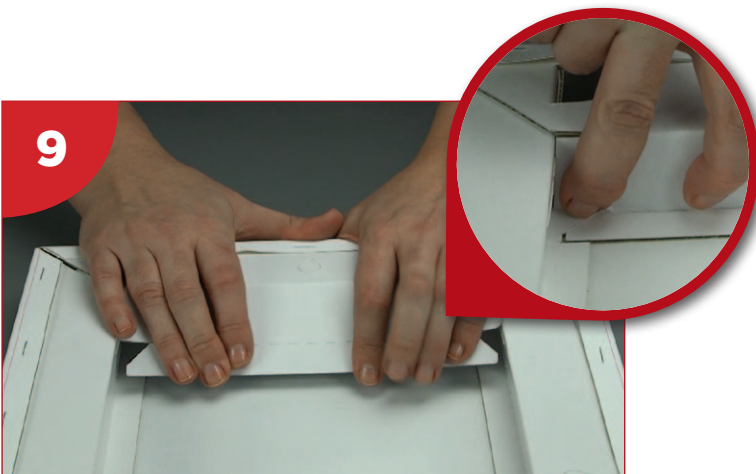
Adventa®



Lift up sides to form the channels.



Now lift one end upwards creating the canvas at the corner. Push tabs inwards and carefully line-up the location tabs into channels slots.



Press down, (checking you're happy with your corners) hold in place and then roll inner frame edge downwards, clicking locking tabs into position.

Damhead Way
Dales Industrial Estate
Peterhead
AB42 3JF

TEL: 01779 470606
EMAIL: info@ashgrovetrading.com
WEB: www.ashgrovetrading.com



Repeat on the opposite side and you're done!


ashgrove
YOU START WE'LL FINISH

PRESENTATION - PACKAGING
PAPER - PRINT FINISHING

Scan this code to
watch the video.

