

LAURA ASHLEY

HOME

Installation Procedure

This unit has been carefully designed to work with other Laura Ashley products from this range. To prevent water ingress a silicone sealant should be applied between the top of the furniture and the basin (sold separately), but it is strongly recommended that you test the position of your worktop, basin and tap before applying the sealant (please refer to individual product instructions for installation information).

The basin should be positioned so that the back face is flush with the back of the unit and there is equal overhang at each side.

Wallmounting the Unit

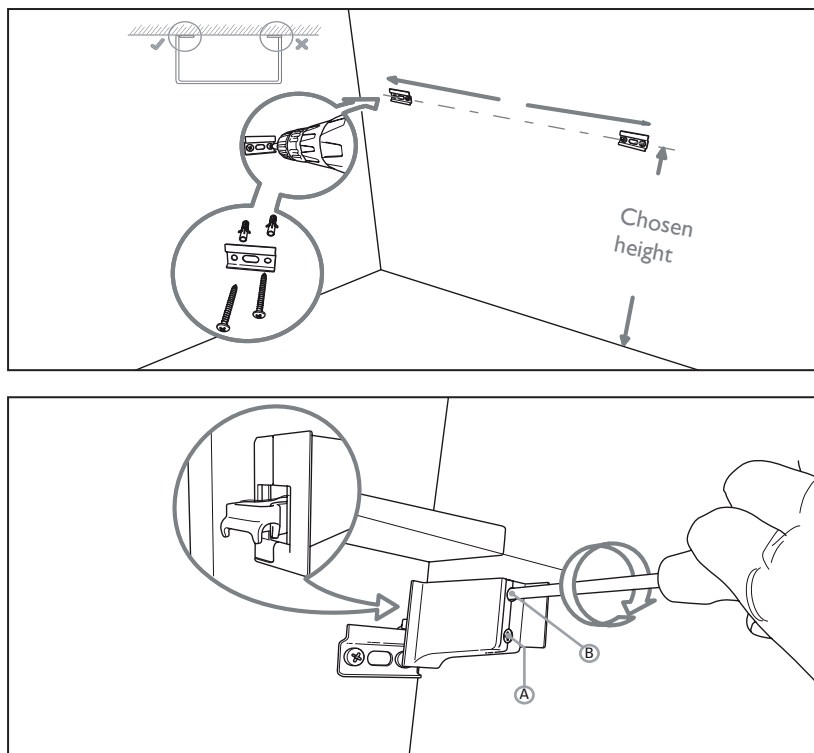
It is recommended that the unit and basin are secured to a suitably reinforced wall to ensure stability. The wall plugs supplied are only suitable for solid stone/brick walls. For plasterboard walls use specialist wall plugs along with supplementary wall strengthening as units can be very heavy. Seek advice from a specialist about the suitability of fixings to be used.

Wear suitable eye protection when drilling. Take care when using power tools near water - the use of a residual current device (RCD) is recommended. Beware of hidden pipes or cables. Take care when drilling tiled surfaces as the drill might slip. Use a piece of masking tape to prevent the drill from wandering.

Select the desired height for the unit and mark the location of each of the wall mounting plates ensuring that they are positioned inside the sidewalls of the unit. For each mounting plate drill two holes in the marked position to suit the wall plugs selected.

We recommend a finished height (including the basin) of 860mm.

Hangers not only tighten the unit against the wall (Screw A) but also offer up/down adjustments to fine-tune the fixing position (Screw B).



Customer Services

Laura Ashley Bathrooms, Brassmill Lane Trading Estate, Bath BA1 3JF

Tel: 01225 303 900 | Fax: 01225 448 877

Email: info@lauraashleybathroomcollection.com Web: www.lauraashleybathroomcollection.com

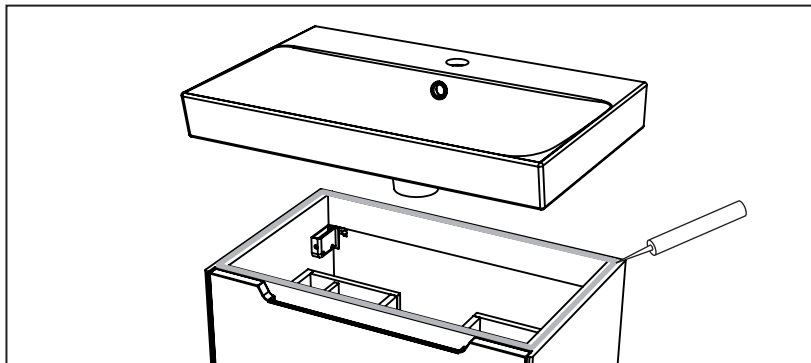
Manufactured by Roper Rhodes under license for Laura Ashley Ltd.

LAURA ASHLEY

HOME

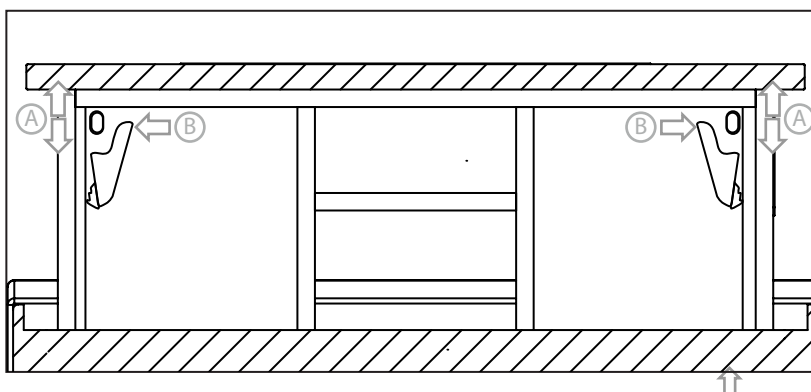
Basin installation

Apply a layer of silicone to the basin on all 4 sides to be fixed to the side panels, back rail and front section as per diagram. The basin should be held in place while the silicone cures



Drawer Adjustment

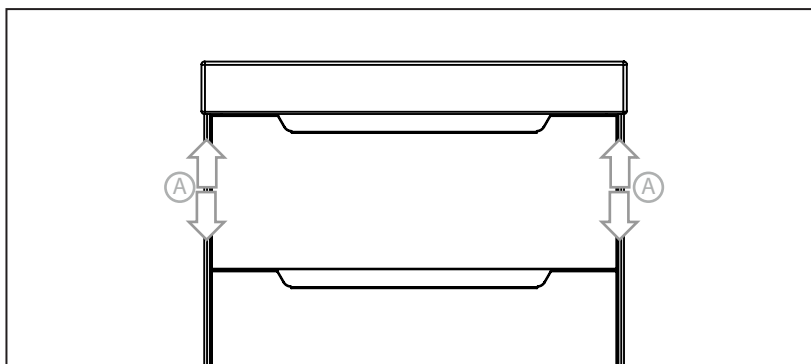
With the drawer fully extended, locate the small plastic clips (A) on both sides of the underneath of the drawer. Slide the round clip forwards or backwards to raise or lower the drawer front on the side required to level the drawer.



Drawer Removal

With the drawer fully extended, locate the large plastic clips (B) on both sides of the underneath of the drawer. Pull the drawer box outwards while pressing both plastic clips to remove the drawer.

When replacing the drawer box onto the runners, ensure that they click into position on both sides of the drawer box at the back - there will be an audible click.



Customer Services

Laura Ashley Bathrooms, Brassmill Lane Trading Estate, Bath BA1 3JF

Tel: 01225 303 900 | Fax: 01225 448 877

Email: info@lauraashleybathroomcollection.com Web: www.lauraashleybathroomcollection.com

Manufactured by Roper Rhodes under license for Laura Ashley Ltd.

LAURA ASHLEY

HOME

Aftercare Instructions

Whilst the item has a high quality durable finish, it should nevertheless be treated with care. Surfaces should be cleaned only using a soft damp cloth and clean water and dried using a soft cotton cloth. Bath cleaning products, even non scratch ones could damage the finished surface.

10 Year Guarantee

We have complete confidence in this Laura Ashley product and as such it is offered with a 10-year guarantee against defects in manufacture. The guarantee requires that this product be used in the manner for which it was intended and that it is installed and maintained in accordance with the fitting instructions and local water bylaws. The guarantee covers products in domestic use only. In the unlikely event that this product should fail during the guarantee period we will either replace the faulty part or the complete unit as appropriate.

Customer Services

Laura Ashley Bathrooms, Brassmill Lane Trading Estate, Bath BA1 3JF

Tel: 01225 303 900 | Fax: 01225 448 877

Email: info@lauraashleybathroomcollection.com Web: www.lauraashleybathroomcollection.com

Manufactured by Roper Rhodes under license for Laura Ashley Ltd.