

Customer Services

Laura Ashley Bathrooms, Brassmill Lane Trading Estate, Bath BA1 3JF

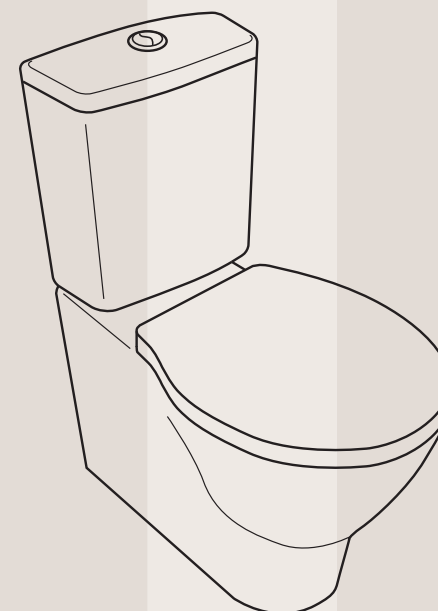
Tel: 01225 303 900 | Fax: 01225 448 877

Email: info@lauraashleybathroomcollection.com | Web: www.lauraashleybathroomcollection.com

Manufactured under license for Laura Ashley Ltd.

LAURA ASHLEY HOME

BAYSWATER CLOSE COUPLED WC INSTALLATION & AFTERCARE INSTRUCTIONS



LA9106 AND LA9107
RETAIN FOR FUTURE REFERENCE

BAYSWATER CLOSE COUPLED WC

INSTALLATION & AFTERCARE INSTRUCTIONS

LAURA ASHLEY
HOME

IMPORTANT

Before installation, flush out any debris from the supply pipe. Do not use chlorine-based cleaners or related products in the cistern. Do not over tighten plastic nuts. Backnuts should be secured hand tight and then half a turn using a suitable spanner.

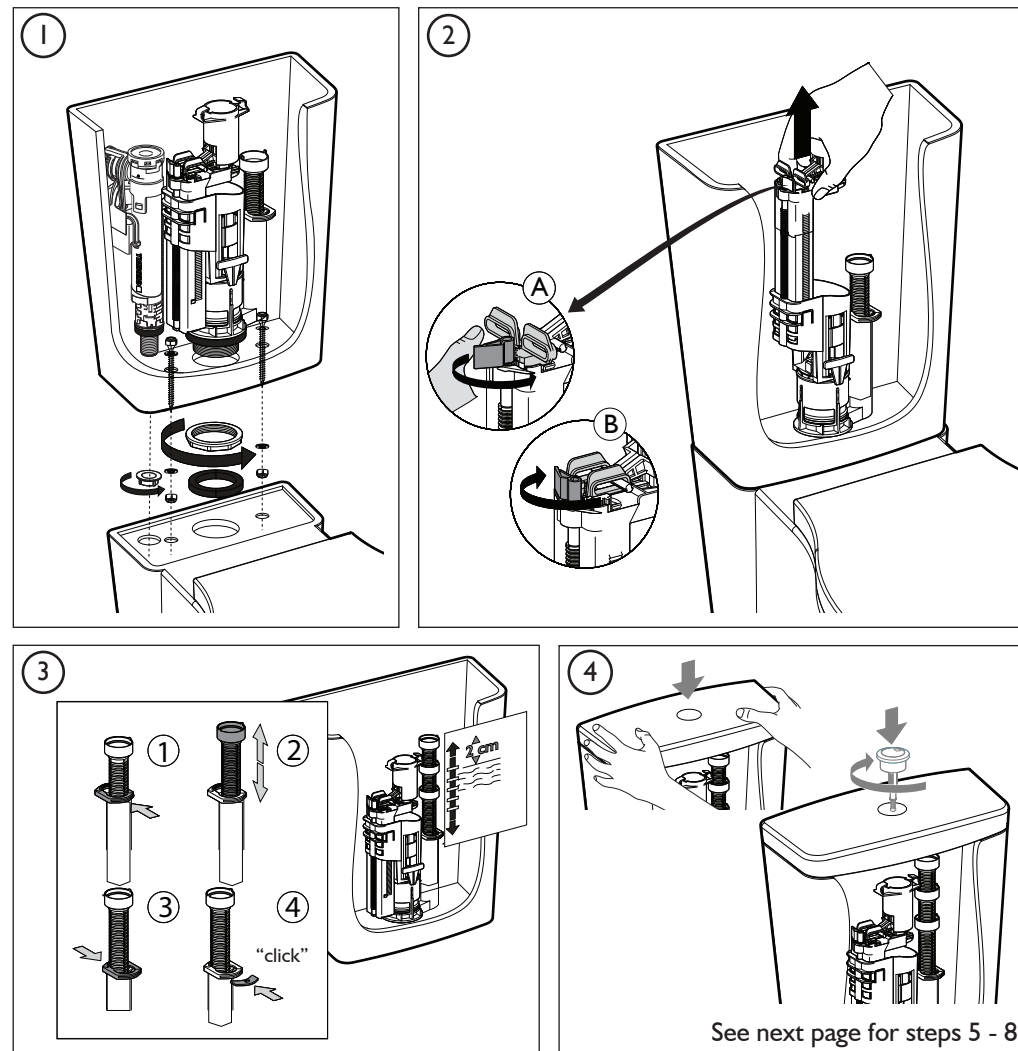
INSTALLATION PROCEDURE

Your Bayswater cistern will be supplied pre-assembled to the correct settings. However, if any adjustments are necessary follow the relevant section below.

- 1) Assemble the fixing screws into the cistern tank. Insert the black gasket onto the outlet of the flush valve between the pan and the cistern tank before securing the tank to the pan. Ensure that the inlet valve float does not touch the inside of the cistern or the flush valve.
- 2) If you need to adjust the height of the mechanism, release the blue lever as shown in detail A. Lift the mechanism to the necessary height. Lock the lever as shown in detail B.
- 3) If you need to adjust the overflow pipe, see figure 3. The overflow pipe must be positioned at least 2cm above the water level, as marked inside the tank.
- 4) Position the cistern lid on top of the cistern and screw the push-button into the mechanism.
- 5) To extract the flush valve mechanism for maintenance, press the side tabs inwards and pull the body of the flush valve up.
- 6) To adjust the amount of water for a reduced flush, adjust the indicated float by following the steps in figure 6 overleaf. Note that the flush valve is factory set to flush 6L full flush, 3L reduced flush.
- 7) To adjust the amount of water for a full flush, moving the tab to the (+) position will increase the amount of water discharged. To reduce move the tab in the (-) direction.
- 8) The inlet valve is pre set to the correct water level. If adjustment to the water level is required, follow the sequence in figure 8 overleaf. Ensure the water level meets the 6L line inside the cistern tank.

MAKING PLUMBING CONNECTIONS

- Connect the soil pipe and ensure it is adequately sealed around the toilet pan outlet to prevent leakage.
- The inlet valve has a 1/2" BSP threaded connector. It is recommended that this thread is wrapped in PTFE tape before connecting the water supply.
- Do not overtighten the supply to the inlet valve as this could damage the inlet valve causing leakage.
- Check all connections are secure and a soil pipe is fitted before testing the flush.



OPERATING INSTRUCTIONS

Cistern Lever Function

Press the outer button for full flush operation.
Press the small button for reduced flush operation.

Inlet Valve Specifications

Water Temperature: 2°C to 25°C
Water Pressure: 0.1 Bar to 10 Bar
Connection: 1/2" BSP

