

Instruction Guide 2

NATURAL STONE (TRADITIONAL AND AGEING METHOD)

Reclaimed flagstones, rough cut, honed and tumbled natural stone.

Using traditional oil and wax based sealers will greatly enhance the appearance and if desired also provide stone surfaces with an instantly aged appearance. Traditional sealers will give natural stone a softer natural look. The following guide will explain the process and help keep your surfaces maintained and in good condition for many years.

THE 3 STEP INSTRUCTION OVERVIEW (see page 2 for more information)

1

LTP Grimex

Coverage 1 litre/25m²

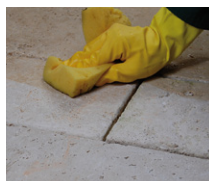


INITIAL CLEANING OF NEWLY INSTALLED SURFACES IF REQUIRED (used surfaces see page 2).

LTP GRIMEX: Cleans and removes dirt and grime conditioning the surface.



Dilute LTP Grimex 1:5 with water.



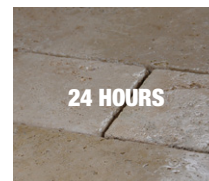
Apply solution to the surface with a mop or sponge. Under floor heating must be off.



Agitate with a nylon pad or scrubbing brush.



Rinse well with clean water.



Allow the surface to dry.

EQUIPMENT: Bucket, mop, scrubber.

2

LTP Stone Oil or LTP Stone Oil Antique

Coverage 1 litre/20m²

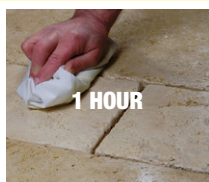


PROTECT AGAINST STAINS (for more information see page 2).

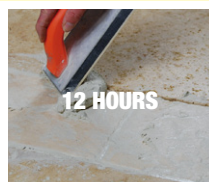
LTP STONE OIL and **LTP CLEAR WAX:** Will help to protect against water, oil, grease, dirt, grime and aid maintenance.



Apply evenly with paint brush or soft cloth. Under floor heating must be off.



Fully saturate the stone with sealer. Remove any unabsorbed excess.



Grout the joints and clean off any excess grout from the surface.



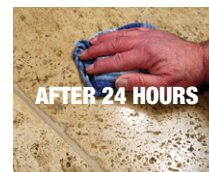
Allow the surface to dry and dust off any remaining cement residues.



Finish with a good coat of wax. Buff well with a soft brush or machine.

AGEING THE APPEARANCE (internal surfaces only)

LTP Stone Oil Antique applied after a coat of LTP Stone Oil and after grouting will deepen the colour of the stone and joints. This will provide an aged appearance. The number of coats applied determine the depth of colour. Finish by polishing with LTP Antique Wax or LTP Clear Wax. To establish the correct number of coats for the desired finish, test this process on a spare piece of stone before proceeding.



EQUIPMENT: Bucket, sponge, grout float, sponge, paint brush, soft cloth.

2b



LTP Waxwash

REGULAR MAINTENANCE (for more information see page 2).

LTP WAXWASH: Maintains naturally waxed surfaces.

3



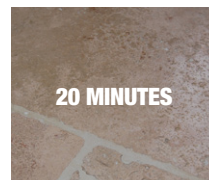
Protect from water for 24 hours and do not wash newly sealed surfaces for 3 days.



Add one capful of product per litre of water in a bucket.



Mop surface with the solution. Do not rinse.



Allow to dry. Do not walk on the surface during drying time – 20 minutes.

A one litre LTP Waxwash will wash a 20 sq.m floor 40 times.

EQUIPMENT: Bucket, mop.

Always read the product label before proceeding.

NEWLY INSTALLED SURFACES

BEFORE GROUTING AND ONCE SURFACES ARE CLEAN AND DRY: Seal with LTP Stone Oil. This treatment will assist with the removal of residual cement and grout from the surface.

1

CLEANING AND REFURBISHING – Used and heavily soiled surfaces

- Before sealing the surface must be thoroughly cleaned. Old layers of sealer, residues from aftercare products and deposits must be removed from the surface and pores of the tiles.
- Depending upon the levels of old wax and dirt, first remove old wax layers with LTP Solvex.
- Dilute LTP Grimex 1:5 with water and apply to the surface with a sponge.
- Agitate the surface with a nylon pad or scrubbing brush and leave for a further 5 minutes (scrubber machines can be used on harder stone surfaces).
- Continue to scrub while adding clean water. Remove residues from the surface using a cloth or scrubber dryer machine.
- Rinse thoroughly with clean fresh water to remove all remaining residues.
- Allow the surface to dry for a minimum of 24 hours before applying the protective seal.
- For the removal of other types of dirt refer to the table below. If you are unsure please call our helpline for advice.

OTHER TYPES OF DIRT

Care product residues, grease and dirt	LTP Grimex or LTP Power Stripper
Wax and acrylic layers, tar, paint, bitumen residues	LTP Solvex and then LTP Grimex
Deeply engrained oil stains	LTP Spot Stain Remover and LTP Fullers Earth

2

PROTECTIVE SEAL TREATMENTS

- LTP Stone Oil, LTP Stone Oil Antique and LTP Clear Wax will render the surface water and oil repellent.
- These products help to prevent staining, aid cleaning and simplify the removal of surface stains.
- LTP Stone Oil and LTP Stone Oil Antique will alter the natural character.
- LTP Clear or LTP Antique Wax will provide an easily maintainable hard wearing satin sheen.
- There are no health concerns once these products have properly cured.
- LTP Wax is film forming so should not be used externally or used on surfaces that are damp or have no damp proof course.
- LTP Stone Oil and LTP Stone Oil Antique are suitable for internal and external use.
- If surfaces are properly maintained we recommend touching up the protective treatment every 3-4 years.

NB. Always test the product on an inconspicuous area. Wet or non absorbent surfaces cannot be treated. LTP Stone Oil and LTP Stone Oil Antique are impregnators which need to fully absorb. Do not allow the product to dry on the surface. Carefully buff with a soft cloth or machine to remove any excess. Unabsorbed sealer if left to dry on the surface should be rubbed over with a little white spirit.

3

MAINTENANCE

LTP WAXWASH (for floors)

Formulated for use on unglazed tiles such as travertine, stone, limestone, slate, terracotta and quarry. Ideal for washing surfaces finished with LTP Clear or Antique Wax. Use routinely in place of normal detergent.

**LTP STONEWASH** (for walls)

This gentle surface cleaner is formulated for use on limestone, marble, granite, slate and polished porcelain. Will clean without breaking down and removing protective seals.



NB. Always follow the detailed instructions on the product labels. Protect stone surfaces from contact with acidic substances. Do not use abrasive materials on honed or polished stones. Avoid using normal detergents or strong bleach cleaners on sealed surfaces as they will gradually remove the protective seal.

This information is offered without guarantee. The material should be used so as to take account of the local conditions and the surfaces to be treated. In case of doubt, the product should be tried out in an inconspicuous area.
© Copyright A.M.Robb Ltd. 2012