

## Instruction Guide 3

# NATURAL STONE (EXTERNAL APPLICATION)

Sawn and honed, riven or rough cut finish. Sandstone, slate, granite, quartzite and rough cut and riven limestone.

Natural riven or rough cut stones are often used outside because they are naturally slip resistant. Normally thicker than internally fixed stone they are more robust and harder wearing. The following guide will help to ensure that your external stone surfaces remain in good condition for many years.

## THE 3 STEP INSTRUCTION OVERVIEW (see page 2 for more information)

1

### LTP Grout Stain Remover

Coverage 1 litre/20m<sup>2</sup>



### INITIAL CLEANING OF NEWLY INSTALLED SURFACES IF REQUIRED (used surfaces see page 2).

**LTP GROUT STAIN REMOVER:** Cleans and removes residual mortar from the textured riven surface.

NB. If used on limestone – rough cut and riven surfaces only. Not honed and smooth.



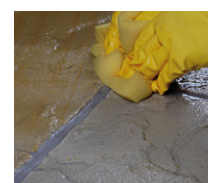
Dilute LTP Grout Stain Remover 1:2 with water. On rough cut limestone dilute 1:6



Apply solution to the surface with a stiff brush and agitate immediately.



Leave for 5 minutes and agitate again. Rinse well with water.



Rinse well with plenty of clean water.



Allow the surface to dry.

**EQUIPMENT:** Bucket, mop, sponge, scrubbing brush or scrubber dryer machine if available.

2

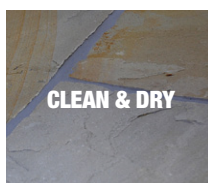
### LTP Colour Intensifier & Stainblock

Coverage 1 litre/15m<sup>2</sup>



### PROTECT AGAINST STAINS (for more information see page 2).

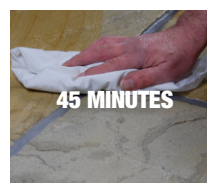
**LTP COLOUR INTENSIFIER & STAINBLOCK:** Enhanced natural finish – protects against water, oil, grease, dirt, grime, organic matter and aids maintenance.



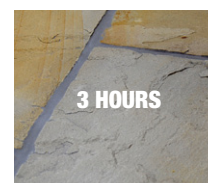
Surfaces must be clean and dry.



Apply the product to the surface evenly using a sponge, brush or soft cloth.



Redistribute to remove excess product and avoid pooling on the surface.



Allow to dry. Do not walk on the surface for at least 3 hours.



Protect from damp and wet conditions for at least 3 days.

**EQUIPMENT:** Bucket, applicator, brush, cloth.

3

### LTP Grimex



### REGULAR MAINTENANCE (for more information see page 2).

**LTP GRIMEX:** Will remove surface dirt when required (normally every 3-6 months).



Dilute LTP Grimex 1:3 with water.



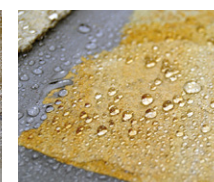
Apply the solution to the surface and agitate.



Leave for 10 minutes before agitating again and then rinse with water.



Leave to dry for 24 hours and then if necessary re-apply a light coat of sealer.



Protect from damp and wet conditions for a minimum of 3 days.

**EQUIPMENT:** Bucket, mop, deck brush or scrubber dryer machine if available.

Always read the product label before proceeding.

## NEWLY INSTALLED SURFACES

**BEFORE GROUTING AND ONCE SURFACES ARE CLEAN AND DRY:** Apply one coat of LTP Colour Intensifier & Stainblock before grouting. This treatment will assist with the removal of residual cement and grout from the surface of the stone.

## 1

## CLEANING AND REFURBISHING – Used and heavily soiled surfaces

- Before sealing the stone must be thoroughly cleaned. Old layers of sealer, dirt residues and light deposits of organic matter and algae must be removed from the surface and pores of the stone.
- Dilute LTP Grimex 1:3 with water, apply to the surface with a sponge or water brush and leave to sit on the surface of the tiles for as long as it takes for the dirt to release. 5-30 minutes depending upon the level of dirt.
- Agitate the surface with a stiff deck brush every 5-10 minutes (scrubber machines can be used).
- Continue to scrub while adding clean water. Remove residues from the surface with water or scrubber machine.
- Rinse thoroughly with clean fresh water to remove all remaining residues. Power washers can be used if necessary.
- Allow the surface a minimum of 3 dry and damp free days before applying the protective seal.
- For the removal of other types of dirt refer to the table below.
- Do not allow the sealer to dry onto the surface. Carefully buff with a soft cloth or machine to remove any excess. This should be done within 1 hour of application.

## OTHER TYPES OF DIRT

Cement residues and mineral salt formations	LTP Grout Stain Remover
Tar, wax, paint, bitumen residues	LTP Solvex and then LTP Power Stripper
Deeply engrained oil stains	LTP Spot Stain Remover and LTP Fullers Earth
Algae deposits and general dirt and grime	LTP Grimex
Organic matter	LTP Grout Stain Remover

## 2

## PROTECTIVE SEAL TREATMENTS

- LTP Colour Intensifier & Stainblock will render the surface water and oil repellent.
- This product prevents staining, aids cleaning and simplifies the removal of surface stains.
- Provides an enhanced barrier of protection that will not greatly alter the surface character.
- There are no health concerns once the product has properly cured.
- The seal is micro porous and so can be used on surfaces that have no damp proof course.
- Wet or non absorbent surfaces cannot be treated as too much moisture will prevent the sealer from penetrating the surface.
- LTP Colour Intensifier & Stainblock is an impregnator which needs to fully absorb.
- Do not allow the product to dry on the surface. Carefully buff with a soft cloth or machine sealer to remove any excess.
- Remove unabsorbed sealer, if left to dry on the surface, by rubbing over with a little more sealer.
- Some stones will be darker after application where as some lighter coloured stones will not be greatly enhanced.
- Always test the product on an inconspicuous area.
- Suitable for internal and external use.



**LTP SPOT STAIN  
REMOVER and  
LTP FULLERS EARTH**



**LTP SOLVEX**

## 3

## MAINTENANCE

**LTP Grimex**

Use every 3-6 months diluted 1:3 in warm water. This will help to remove stubborn surface dirt and grime when required.

**NB.** Always follow the detailed instructions on the product labels. Protect stone surfaces from contact with acidic substances. Do not use abrasive materials on mechanically polished stones. Avoid using normal detergents or strong bleach cleaners on sealed surfaces as they will gradually remove the protective seal.

This information is offered without guarantee. The material should be used so as to take account of the local conditions and the surfaces to be treated. In case of doubt, the product should be tried out in an inconspicuous area.  
© Copyright A.M.Robb Ltd. 2012