

WIN PRIZES WORTH £5500 FROM GROHE AND IDEAL STANDARD!

KITCHENS BEDROOMS BATHROOMS

FEBRUARY 2015

Hub of the home

SEE MORE OF
THIS KITCHEN
CLICK HERE

LET OUR REAL HOMES
INSPIRE AN OPEN-PLAN
KITCHEN YOUR FAMILY
AND FRIENDS WILL LOVE

Appliances

Freshen up
with the latest
extractor hoods

Kitchen style

Worktops that
look good and
perform brilliantly

RELAXATION THERAPY

Create a spa-like experience in your own bathroom,
plus guarantee a great night's sleep with the right bed

Also inside: Radiators, wood-burning stoves and kitchen flooring



CARIBBEAN *dream*

A traditional London townhouse has been remodelled into a light-filled family home, inspired by the owner's Antigua bolthole

Words: **Andrea Dean** Photography: **Jake Fitzjones**

Even homes in some of London's swankiest neighbourhoods have space constraints. So when Paul Andrews, the owner of a five-storey Victorian townhouse in Chelsea, decided he wanted to add a home cinema, he had to build down into the basement, creating another floor. At the same time, he changed the layout of some of the other rooms, and enlisted interior designer Maurizio Pellizzoni of MPD London to update the old-fashioned and rather cluttered décor.

"My brief was quite simple," says Maurizio. "Paul asked me to replicate the open, airy feel of the house he owns in Antigua, using fresh, natural colours. It also needed to be family-friendly as he has two young children."

The kitchen is at ground-floor level, sitting between the dining room and a living area, which was formerly the breakfast room. Even though there are no windows in the kitchen itself, it's flooded with light thanks to the sloped glass ceiling and full-height glass doors at the end of the living area. The original kitchen was in the same position and there was no reason to move it. However, new, custom-made white units were installed, which contrast with rich, hard-wearing black granite worktops. Glass splashbacks protect the walls, a gas hob is sited opposite the sink and an extractor, fridge and dishwasher are concealed behind the flat-fronted unit doors, creating a streamlined look.

Polished walnut flooring has been used throughout this level. Teamed with a soft white and cream colour palette, it seamlessly links the three areas, opening up the space as well as enhancing the colonial ambience.

An elegant chandelier hangs above the dining area, drawing the eyes upwards. The white lacquered dining table was already in place, but the chairs are new and have been fitted with informal slipcovers. Similar creamy fabric has been used for the sofa and oversized footstool – which doubles up as a coffee table – in the cosy living area at the other end of the room.

Moving up a couple of flights of stairs, the master bedroom and ensuite bathroom – previously another bedroom – take up most of the second floor. The showstopper bed, by Ralph Lauren, is the focal point of the bedroom and influenced the design for the rest of the space and the bathroom. "Paul wanted a four-poster and this was the first piece I sourced for the house. I was familiar with it as I used to work for Ralph Lauren and thought it would be perfect," explains Maurizio. "Although Paul loved it, he wanted to see other options, but he always came back to this one. I dressed it by piling bold, zebra-print cushions onto the crisp white bed linen to enhance the tropical feel." In response to a request for an extra layer in the room, Maurizio has draped a swathe of fabric behind the bedposts. It took some experimentation to get it right – initially he tried hanging it over the bed, but this didn't work given the proportions of the room, which is actually quite small.

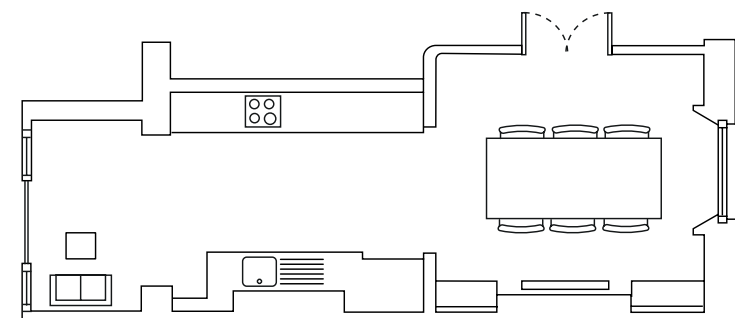
The ensuite bathroom, accessed by a double door, is very generously sized. It accommodates a freestanding roll-top bath, a walk-in shower enclosure and 'his and hers' basins, which sit on top of a walnut vanity unit, with the dark wood echoing the shade of the bed frame. The position of the bath was determined by both Paul's wishes and the existing pipework, and its Victorian design is a nod to the age of the house. White shutters provide privacy without restricting light and once again evoke the feel of the overseas home. The spacious shower enclosure incorporates a storage alcove built into what was once the doorway of the second bedroom.

Internally the property certainly doesn't look and feel like a traditional Chelsea townhouse. Maurizio has transformed it into an oasis of calm, tastefully furnishing rooms in natural fabrics and subtle shades and adding touches of chocolate brown for contrast. "I achieved what Paul wanted and he's delighted that I've recreated a touch of Antigua in central London," says Maurizio. All that's missing is the weather to match! **KBB**

Left: The open-plan layout and natural palette used throughout the ground floor ensure that the kitchen and adjoining dining and sitting rooms are always filled with light.

Below: A portrait of a favourite Disney character looks down on the sitting area, which the family still refer to as the breakfast room. The children love to sit and watch TV in here, where their parents can keep an eye on them.

Right: Situated next to the kitchen, the dining room features built-in storage to maximise space. Even a narrow shelf above the radiator cover is used for display.





Q&A

Designer Maurizio Pellizzoni says...



What element(s) took up the majority of the budget?

The bed was the single most expensive piece of furniture. It cost about £10,000.

Are there any places where you managed to save money?

Some of the furniture was reused – for example, we kept the existing dining table and a couple of armchairs were reupholstered.

Do you have any tips for people embarking on a similar project?

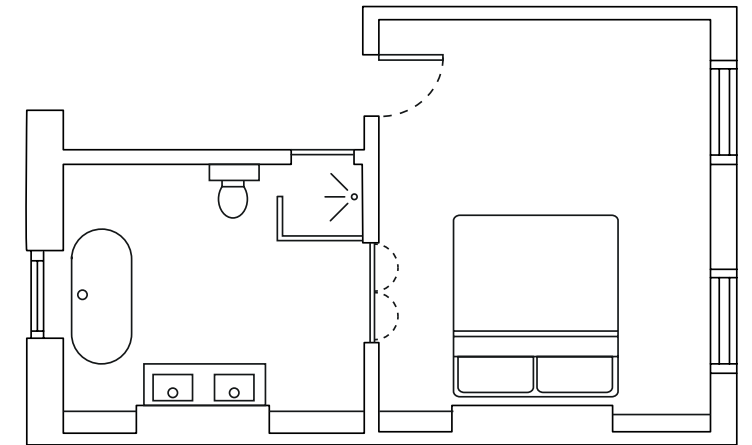
Think very carefully about the use of space in your home, and ceiling heights.

What advice would you give to clients when choosing contractors and installers?

Always take time to do your research and get quotes from more than one company.

Below: With such a wow-factor bed, the master bedroom needed little else. Designer Maurizio Pellizzoni kept the walls and bed linen pale, adding just a few zebra-print accents to let the bed speak for itself.

Opposite page: Although the bathroom flooring resembles marble, it's actually porcelain, which has the same appearance but is low maintenance and less likely to stain or scratch.





The guest bedroom complements the master bedroom scheme with its four-poster bed and brown and white colour scheme, but it is slightly more understated.

SourceBook

DESIGN

Interior design Maurizio Pellizzoni of MPD London (020 7352 3887 or www.mpdlondon.co.uk)

KITCHEN

Cabinetry Custom-made by joiner in white lacquer. For similar try Boffi (020 7629 0058 or www.boffiuk.com)

Worktop Granite, Euromarble (020 8888 2304 or www.euromarble.co.uk)

Splashbacks Painted glass. For similar try Sprayed Glass Splashbacks UK (01942 389554 or www.sprayedglassplashbacks.co.uk)

Appliances Hob, oven and extractor, Miele (0330 160 6600 or www.miele.co.uk)

Sink and tap Chicago single sink and tap, Reginox (01260 280033 or www.reginox.co.uk)

Flooring Polished walnut, The Solid Wood Flooring Company (01666 504015 or www.thesolidwoodflooringcompany.com)

LIVING AREA

Sofa Andrew Martin (020 7225 5100 or www.andrewmartin.co.uk)

Footstool Oka (0844 815 7380 or www.okadirect.com)

Rug Blenheim Carpets (020 7823 3040 or www.blenheim-carpets.com)

Cushions Oka, as before

Blind fabric Andrew Martin, as before

Side table For similar try Habitat (0344 499 4686 or www.habitat.co.uk)

DINING AREA

Table For similar try OneDeko (020 7377 5900 or www.onedeko.co.uk)

Chairs Oka, as before

Rug Blenheim Carpets, as before

Chandelier Brissi (020 7229 2323 or www.brissi.com)

Radiator covers For similar try Kingston Cabinets (0800 988 6009 or www.kingstoncabinets.com)

BEDROOM

Bed Victoria Falls by Ralph Lauren (020 3450 7750 or www.ralphlauren.co.uk)

Bed linen The White Company (020 3758 9222 or www.thewhitecompany.com)

Cushions For similar try Amara (0800 587 7645 or www.amara.com)

Throw De Le Cuona (020 7584 7677 or www.delacuona.co.uk)

Ottoman, dressing table and stool Brissi, as before

Carpet PWC Carpets (020 7349 7440 or www.pwcinternational.co.uk)

Blind fabric Andrew Martin, as before

Lamps Ralph Lauren, as before

ENSUITE

Bath Imperial Bathroom (01922 743074 or www.imperialbathroom.com)

Basins and vanity unit Imperial Bathroom, as before
WC, shower enclosure and brassware

All Imperial Bathroom, as before

Flooring Porcelain tiles, World's End Tiles (020 7819 2100 or www.worldsendtiles.co.uk)

Shutters The New England Shutter Company (020 8675 1099 or www.tnesc.co.uk)

Chair Brissi, as before

Ladder towel rail For similar try Shimu (0800 088 6800 or www.shimu.co.uk)

Wall lights Vaughan Designs (020 7349 4600 www.vaughandesigns.com)

Mirror above basin For similar try The Chandelier & Mirror Company (01892 541355 or www.chandeliersandmirrors.co.uk)

GUEST BEDROOM

Bed For similar try Get Laid Beds (020 7183 5464 or www.getlaidbeds.co.uk)

Wardrobe For similar try Sharps (0800 789789 or www.sharps.co.uk)

Carpet For similar try PWC Carpets, as before

Chest of drawers and blanket chest For similar try Puji (020 8886 3000 or www.puji.com)

Throw For similar try Oka, as before

Rug For similar try The Rug Company

Bed linen The White Company, as before

COST

A similar kitchen would cost approximately £15,000, a similar master bedroom around £20,000 and a similar ensuite around £12,000