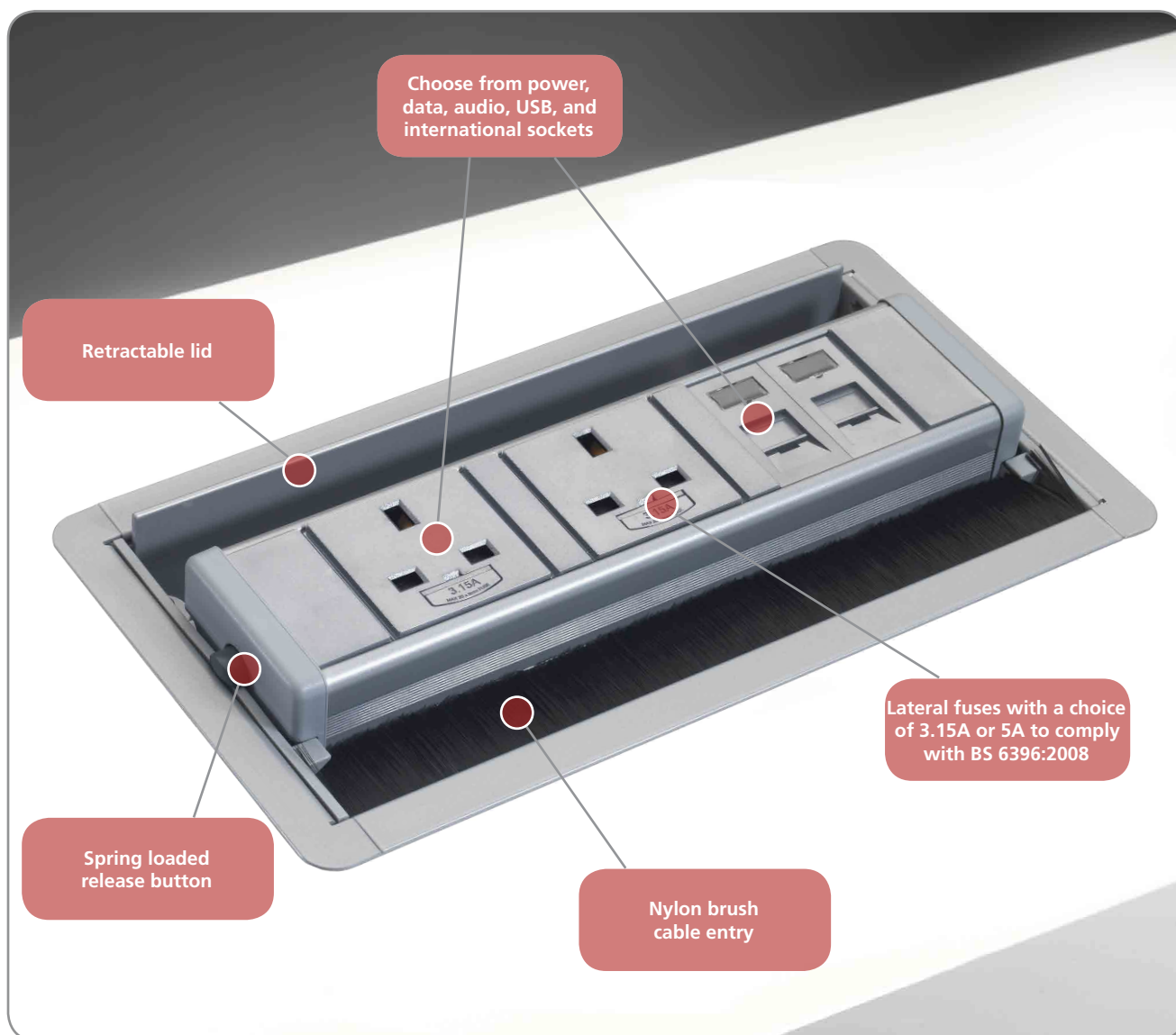


Horizon power module

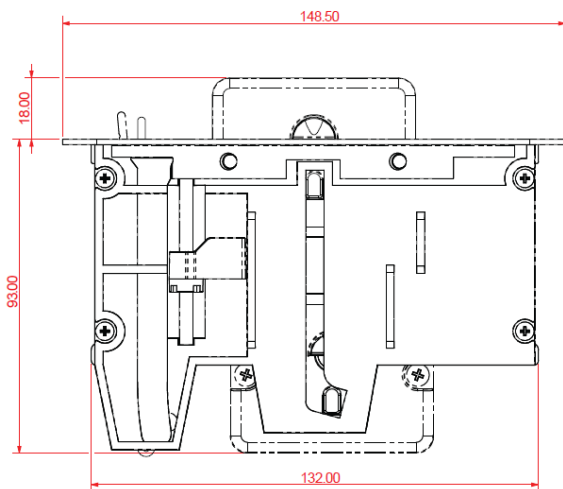
The Horizon through desk module offers accessible power and data sockets at the desk top. This unit fits flush into the desktop with an angular and smooth aesthetic finish. Spring release buttons lock unit above desk surface. These are then pushed together to allow the unit to retract into housing below desk surface. The Horizon's lid retracts to allow access from both sides, when opened it lifts and locks proud of the desk surface which makes it ideal for use in boardrooms or conference tables. Horizon is finished in Fusion Silver.



- Fusion silver finish with flame retardant ABS Grey (RAL7004) socket fascias
- Module lifts and locks proud of the desk surface
- Lid retracts to allow access from both sides – suitable for conference tables
- Fitting from above, locks into position using two screws
- Spring loaded buttons lock module proud of desk surface and on release allows module to retract below desk surface
- Available with power and data configurations to suit individual client needs
- All UK power socket versions feature individual fuses
- Choice of 3.15A or 5A fuses are available to comply with BS 6396:2008
- Unit complies with BS 5733
- All standard options are supplied with a 3m mains lead to 13A UK plug and 3m data lead where relevant



power module **Horizon**



Manage your energy

Configure Horizon to allow energy to be monitored and controlled with Footprint. See page 89 for more details.



Build it your way

Horizon is available with the following modification. Contact us with your required specification for a quote on **+44 (0)1709 829 511**.

UK Sockets:

UK NS/ Ang Fused & Unfused
Round Earth NS / Ang Fused & Unfused
T' Earth NS Fused & Unfused

International Sockets:

American IEC C13
Australian IEC C19
Brazilian (Euro) Indian
French/Belgium Italian
German Japanese
Swiss

Data, Telecommunications, AV:

3.5mm Audio Phono
9 Pin D Data RJ11 Tel Shuttered
BT Tel Shuttered RJ45 Cat5e
Co Axial RJ45 Cat6
Ethernet BNC S Video
HDMI SVGA
USB USB - HUB

Circuit Protection, Switching, Indication:

Ammeter Neon Indicator
Filter RCBO
MCB RCD
Varistor
Switch - Double Pole (16A Max Supply)
Switch - Single Pole (16A Max Supply)

In-Feeds

Conduit - Metal
Conduit - Plastic
Hard Wired Mains Cable 1.5mm
Hard Wired Mains Cable 2.5mm
Hard Wired Mains Cable 4.0mm
Hard Wired SY Cable 1.5mm
Hard Wired SY Cable 2.5mm
Hard Wired SY Cable 4.0mm
Wieland Tail 1.5mm tap off

| Code | Description |
|--------|--|
| 96P044 | 2 x power sockets 3.15A individually fused, supplied with 3m mains to 13A UK plug <i>Product Cutout Dimensions: 134mm x 205mm*</i> |
| 96P045 | 4 x power sockets 3.15A individually fused, supplied with 3m mains to 13A UK plug <i>Product Cutout Dimensions: 134mm x 330mm*</i> |
| 96U119 | 2 x power sockets, 2 x RJ45 Cat5e data sockets 3.15A individually fused, supplied with 3m mains to 13A UK plug and 3m data leads <i>Product Cutout Dimensions: 134mm x 267mm*</i> |
| 96U120 | 4 x power sockets, 2 x RJ45 Cat5e data sockets 3.15A individually fused, supplied with 3m mains to 13A UK plug and 3m data leads <i>Product Cutout Dimensions: 134mm x 391mm*</i> |
| 96H065 | 2 x power sockets, 2 x RJ45 Cat5e, 1 x VGA, 1 x Mini Jack 3.15A individually fused, supplied with 3m mains to 13A UK plug and 3m data leads, 3m lead to 15 pin SVGA plug and 3m lead to 3.5mm plug <i>Product Cutout Dimensions: 134mm x 330mm*</i> |
| 96H066 | 2 x power sockets, 2 x RJ45 Cat6, 1 x VGA, 1 x Mini Jack 3.15A individually fused, supplied with 3m mains to 13A UK plug and 3m data leads, 3m lead to 15 pin SVGA plug and 3m lead to 3.5mm plug <i>Product Cutout Dimensions: 134mm x 330mm*</i> |

Please note: Fuses only accessible after removal of equipment plug. Lead lengths shown will be the conductor length and not the distance from the end of the module to the plug. For example, a 3m prewired power lead will be approximately 2.875m as 125mm will be internal for the termination, this is also applicable for data leads.

Data fascias may be subject to colour change.

On Desk

In Desk

Under Desk

Accessories