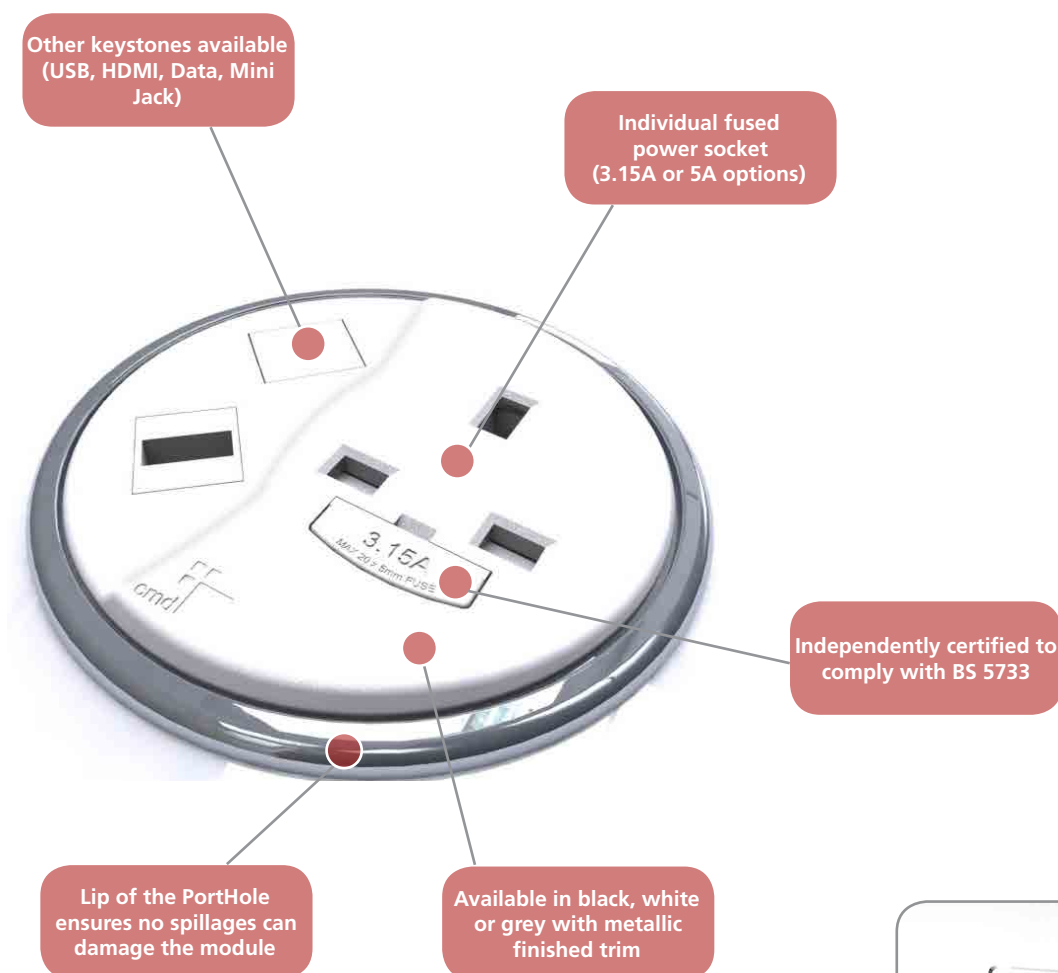


PortHole power module

With its innovative design, PortHole is ideal for adapting an existing 80mm cable hole to allow a single power socket and a choice of keystones to be fitted to a desk with a simple screw fit mechanism.



- Available with a choice of black, white and grey plastic fascia surrounded by a metallic finished trim
- Compact dimensions, ideal for space-saving installations
- Features individual fuse & independently certified to BS 5733
- Fully segregated power and data
- Easy to retrofit, incorporates an under desk, hand tightened barrel nut to fix unit in place
- Power and data cables all exit from the base of the unit & come with a standard 1m mains lead to 3 pole connector, 3m data lead & 2m USB lead where appropriate
- Designed to fit any desk thickness between 13mm and 50mm



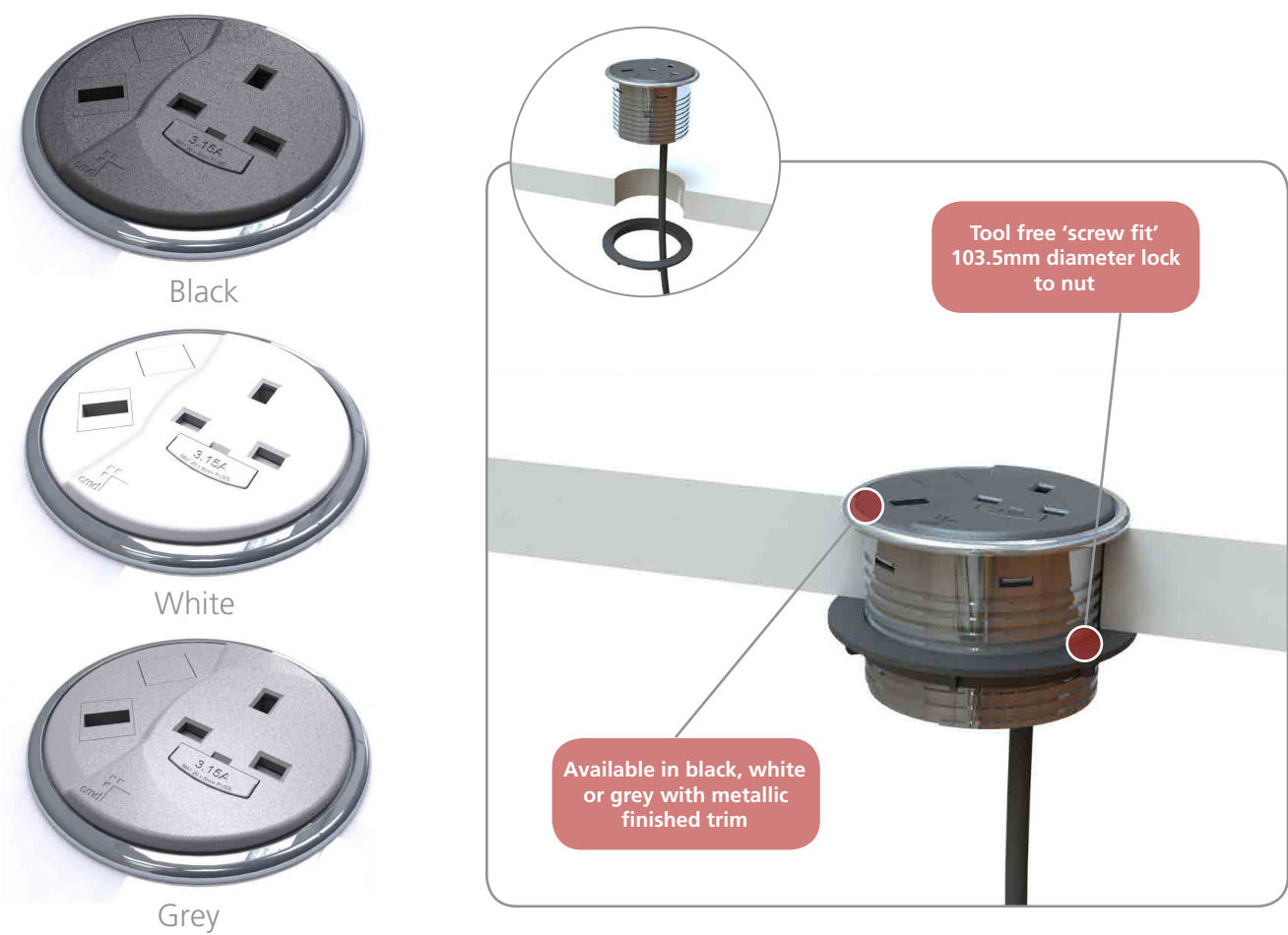
White PortHole with Silver Motion Arm

Note: Fuses only accessible after removal of equipment plug. Lead lengths shown will be the conductor length and not the distance from the end of the module to the plug. For example, a 3m prewired power lead will be approximately 2.875m as 125mm will be internal for the termination, this is also applicable for data leads.

power module *PortHole*

Code	Colour	Description
90P001B	Black	1 x Power Socket
90P001G	Grey	Power socket 3.15A individually fused with 1m mains cable to 3 Pole connector
90P001W	White	
90U001B	Black	1 x Power Socket, 1 x RJ45 Cat6 Socket
90U001G	Grey	Power socket 3.15A individually fused with 1m mains cable to 3 Pole connector and 3m data lead
90U001W	White	
90U002B	Black	1 x Power Socket, 2 x RJ45 Cat6 Sockets
90U002G	Grey	Power socket 3.15A individually fused with 1m mains cable to 3 Pole connector and 2 x 3m data leads
90U002W	White	
90U003B	Black	1 x Power Socket, 1 x USB Socket
90U003G	Grey	Power socket 3.15A individually fused with 1m mains cable to 3 Pole connector and 2m USB lead
90U003W	White	
90U004B	Black	1 x Power Socket, 2 x USB Sockets
90U004G	Grey	Power socket 3.15A individually fused with 1m mains cable to 3 Pole connector and 2 x 2m USB leads
90U004W	White	
90U005B	Black	1 x Power Socket, 1 x RJ45 Cat6 Socket, 1 x USB Socket
90U005G	Grey	Power socket 3.15A individually fused with 1m mains cable to 3 Pole connector, 3m data lead and 2m USB lead
90U005W	White	

HDMI sockets, Mini Jack Keystones and 5A fuses are also available. Cat6 socket is fully backward compatible.



On Desk

In Desk

Under Desk

Accessories