

TNK FLEX

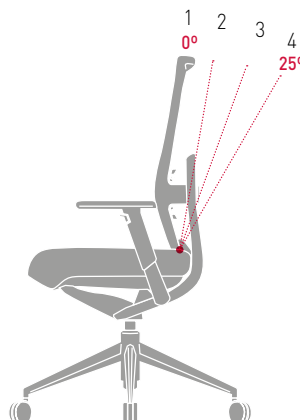
— By Alegre Studio —



1 SYNCHRO MECHANISM

The synchronised tilt system offers the possibility of adjusting the maximum angle of inclination of the backrest in 4 positions. The user determines the maximum tilting point, which can be locked in the upright position.

By operating the handle **(A)** in one of its four possible positions the maximum tilt angle is determined. Turning the regulator **(B)** will obtain a higher or lower tension of the mechanism.



Synchron lockable at 4 positions



Tension Control Knob

2 AIR COMFORT SYSTEM

The seat foam has been designed with air chambers, to advantage pressure and decompression of the foam in an adaptative way. This improves comfort, flexibility and a better pressure distribution



ACS technology

3 FLEXIBLE SHEETS

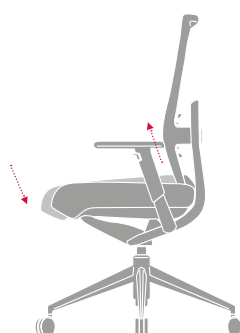
An ergonomic designed system makes the user seat in a proper way. It has a flexible sheets in front and back in order to reduce pressure on the muscles



Flexible sheets

4 360° SWING SEAT

The 360° swing system makes the seat follow the moves of the user to any gesture or change of position. This system gives a dynamic negative angle seat, bringing the back to a maximum ergonomic position.

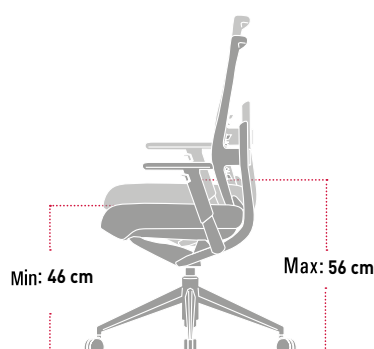


Adaptative seat

5 SEAT HEIGHT

Range of elevation from 46 cm to 56 cm.

The adjustment of the seat height is performed using a gas pump. The mechanism is activated by pushing the lever up **(C)** located on the righthand side (seated in the chair) under the seat.

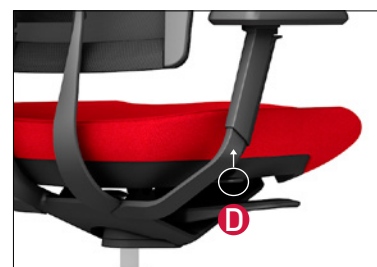
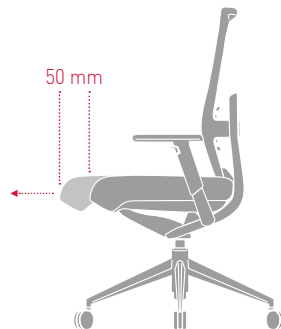


Gas lift

6 SLIDING SEAT

TNK FLEX has a ratchet mechanism that enables locking in 5 positions with a total movement range of 50 mm.

The mechanism is operated by pressing up the lever **(D)** located on the right side under the seat.



Sliding seat

7 BACKREST AND TILT

FLEX OF THE BACK. The 360° adaptability is achieved by using a silent block that combines the oscillation and flex in all directions. The back acts adaptively even when the synchro mechanism is locked.

HEIGHT ADJUSTMENT OF THE BACK

A guided system which allows the user to adjust the height of the backrest with a total range of 50 mm.



SIDE



UP / DOWN

8 LUMBAR AND HEAD ADJUSTMENT

ADJUSTMENT OF LUMBAR STRENGTH

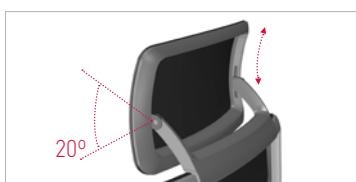
The **TNK FLEX** chair enables the regulation of lumbar strength with a total range of 25 mm.

FLEX OF THE LUMBAR STRENGTH

The lumbar strength is adaptable thanks to its design and materials employed. Furthermore, it is fixed to the back using a flexible arc which enables an increase or decrease in its total radius.

ADJUSTABLE HEADREST

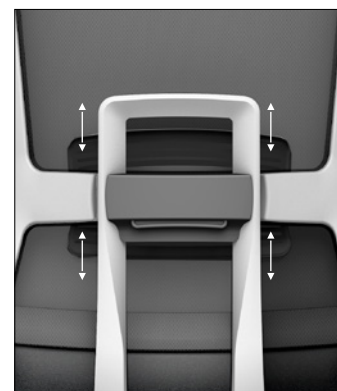
The headrest can be adjusted in height with a range of 50 mm and an inclination angle of 20°. There are 3 types of finishes for the headrest: Finishes of Polypropylene, technical mesh and **TEX** fabric.



Technical mesh or TEX fabric headrest



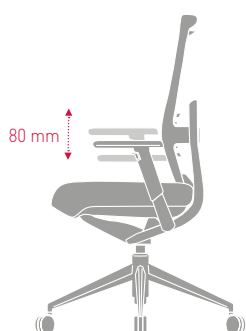
PP headrest



9 ADJUSTABLE ARMS

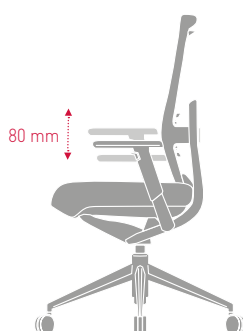
Three directions of adjustment: Height adjustment with a total elevation range of 80 mm, longitudinal movement with a total range of 45 mm and a lateral displacement with a total range of 25 mm per armrest (50 mm total). The armrests are available in PUR and rigid PP

1D Polypropylene (PP) Arms

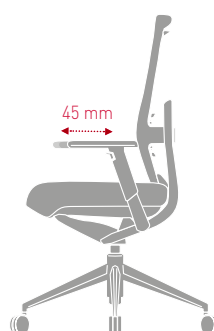


Height

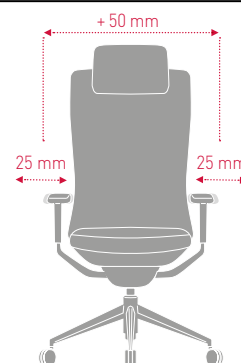
3D arms with Polyurethane (PUR) PADS



Height



Forward - Backward



Width

■ TNK FLEX - POLYAMIDE BASE

Polypropylene (PP) Armrests
Polyurethane (PUR) Armrests - *Optional*



POLYAMIDE BASE FINISHES



Black

■ TNK FLEX - ALUMINIUM BASE

Polyurethane (PUR) Armrests



ALUMINIUM BASE FINISHES



White



Silver



Black



Polished

■ STANDARD CASTORS

All chairs are offered in a standardized way with silent running castors of teflon which gently allows tread without exerting pressure and gives lightness and freshness to the design of the base.



STANDARD CASTORS

- Silent teflon tread .
- Black finish.
- 65mm diameter
- No self-locking.

■ OPTINAL CASTORS

The self-locking castors are characterised by complying with security restrictions established in some projects, as they prevent accidental movement of the chair. Also, they have the disadvantage of sliding with difficulty when no weight is exerted. In a seated position or with pressure, allows a smooth roll without pressure.



AUTO-BRACKING CASTORS

Its auto brake system provides security by avoiding inadvertent movement of the chair, after pressing on its base to sit, it allows a smooth roll without pressure.



ANTISTATIC CASTORS



AUTO-BRACKING HOLE CASTORS

Its auto brake system provides security by avoiding inadvertent movement of the chair, after pressing on its base to sit, it allows a smooth roll without pressure. It includes an easy system to unlock the self-locking, contemplating itself as fundamentally an aesthetic choice.

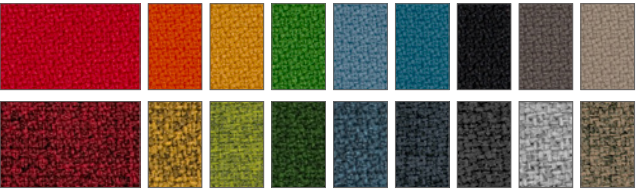


POLYPROPYLENE CAPS

TEX BACKREST

■ BACKREST AND SEAT

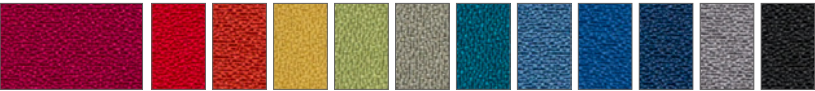
GROUP M - MELANGE



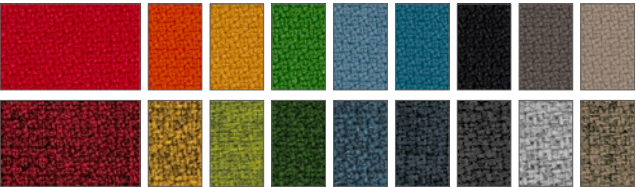
TECHNICAL MESH BACKREST

■ SEAT

GROUP T-C



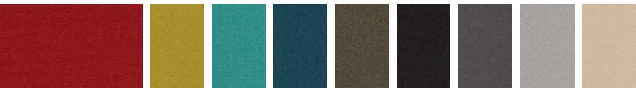
GROUP M - MELANGE



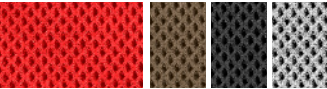
GROUP N



GROUP F - ATLANTIC



GROUP H - HARLEQUÍN

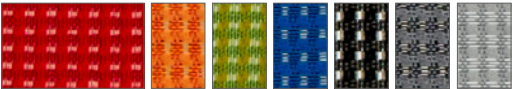


GROUP G - OMEGA 3D

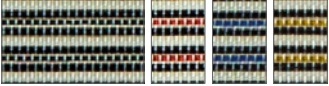


■ BACKREST

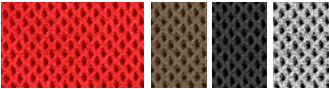
NET



PLUS



GROUP H - HARLEQUÍN



DESCRIPTION

- 1 Foam fabric.
- 2 Perimeter frame injected with Polypropylene + Fiberglass.
- 3 Back elevation system and adaptable lumbar support.
- 4 Height Adjustable arms. PA + FV cane. **PP** support.
Adjustable 3D arms. PA + FV cane. **PUR** support.
- 5 360° swing adaptative seat. Allows dynamic negative angle. Seat foam with ACS technology and flexible sheets that reduce pressure on muscles.
- 6 Gas lift.
- 7 Five-star base.
 - Polyamide (PA) - Ø 67,5 cm.
 - Aluminium - Ø 67,5 cm.
- 8 Silent polyamide castor (PA6) with teflon tread in TPU.
- 9 Adaptive headrest made from tex fabric or optional PP sheet.
(Only for model with high backrest)



BACKREST AND SEAT

Group M-Melange.

(PLEASE SEE FINISHES AND FABRIC ON THE PREVIOUS PAGE)

BASES AND CASTORS



Polyamide - Ø 67,5 cm
Silent black castor - Ø 65 mm
FINISH
Black.



Aluminum injection - Ø 67,5 cm
Silent black castor - Ø 65 mm
FINISHES
White, Black, Silver and Polished.

OPTIONAL ACCESSORIES



DIMENSIONS

Standard Backrest

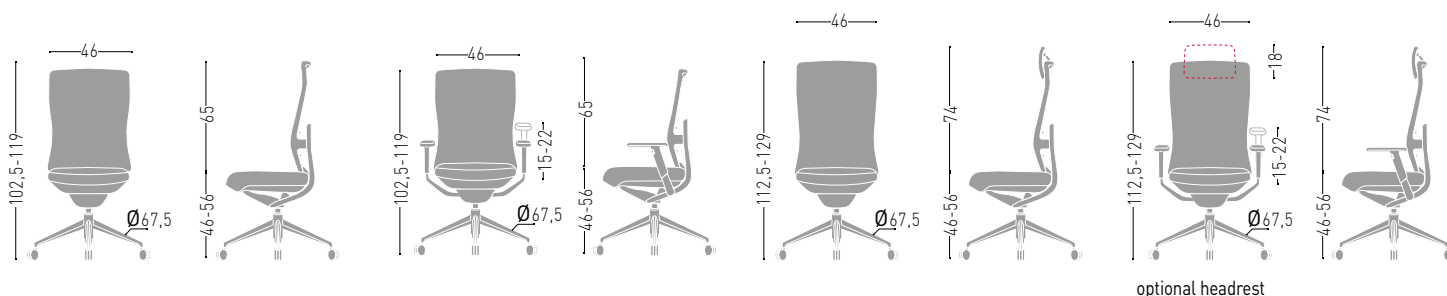
Total height: from 1025 to 1190 mm
Total width: 675 mm
Total depth: 675 mm

Seat height: from 460 to 560 mm
Seat width: 460 mm
Seat depth: from 460 to 500 mm

High backrest

Total height: from 1125 to 1290 mm
Total width: 675 mm
Total depth: 675 mm

Seat height: 460 a 560 mm
Seat width: 460 mm
Seat depth: from 460 to 500 mm





MATERIALS

TNK FLEX has been designed to be manufactured with recycled materials, danger substances such as chrome, mercury or cadmium are not used in big quantity. Recyclables Aluminium and Steel 100%. Organic volatile Components. Packages manufactured with recycled carton. Ink thinner free.



PRODUCTION

Energy use is optimized during the production process. Minimum environmental impact. Last generation technological system in coating processes. Painting that have not been used is recovered to use it again. Zero COVs emissions and other contaminant gas. Close water circuit to clean the metals. Heat recovery. Automatic manufacture systems. Cut process is planned.



TRANSPORT

Optimum packaging to reduce space in transport and save energy.



USE

Long lasting use. Spare parts and replacements available. Easy to clean and maintenance.



DISPOSAL

Recyclable. Easy and quick to split **TNK FLEX** components. Packages are reuse by our supplier to avoid waste generation. Carton used in packages is recyclable.

CERTIFICATES AND REFERENCES

The different programmes get points in different environmental categories to get the LEED certificate (sustainability, material and resources, water, energy and atmosphere, inner environment quality, innovation and design).



The mark of responsible forestry



PEFC Certificate



EN ISO 14006:2011
ECODISEÑO
Certificate



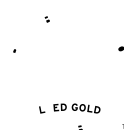
UNE-EN ISO 9001:2008
ISO 9001 Certificate



UNE-EN ISO 14001:2004
ISO 14001 Certificate



E1 Certificate by EN 13986



■ DESCRIPTION

- ① Perimeter frame injected with Polypropylene + fiberglass.
- ② High tenacity technical mesh.
Finishes: **NET, PLUS and HARLEQUÍN**
- ③ Back elevation system and adaptable lumbar support.
- ④ Height Adjustable arms. PA + FV cane. **PP** support.
Adjustable 3D arms. PA + FV cane. **PUR** support.
- ⑤ 360° swing adaptative seat. Allows dynamic negative angle. Seat foam with ACS technology and flexible sheets that reduce pressure on muscles.
- ⑥ Gas lift.
- ⑦ Five-star base.
· **Polyamide (PA)** - Ø 67,5 cm.
· **Aluminium** - Ø 67,5 cm.
- ⑧ Silent polyamide castor (PA6) with teflon tread in TPU.
- ⑨ Adaptive headrest made from tex fabric or optional PP sheet.
(Only for model with high backrest)

■ BACKREST

NET, PLUS, and Group H-Harlequin.
(PLEASE SEE FINISHES AND FABRICS)

■ SEAT

Group T-C, Group M-Melange, Group N, Group H-Harlequin,
Group G-Omega 3D y Group F-Atlantic.
(PLEASE SEE FINISHES AND FABRICS)

■ BASES AND CASTORS



Polyamide - Ø 67,5 cm
Silent black castor - Ø 65 mm
FINISH
Black.

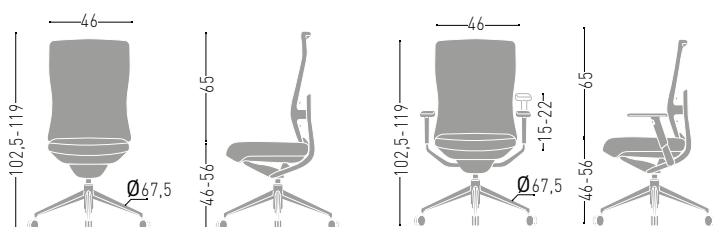


Aluminum injection - Ø 67,5 cm
Silent black castor - Ø 65 mm
FINISHES
White, Black, Silver and Polished.

■ DIMENSIONS

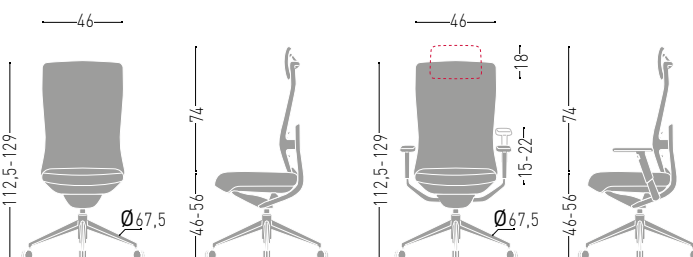
Standard Backrest

Total height: from 1025 to 1190 mm
Total width: 675 mm
Total depth: 675 mm
Seat height: from 460 to 560 mm
Seat width: 460 mm
Seat depth: from 460 to 500 mm



High backrest

Total height: from 1125 to 1290 mm
Total width: 675 mm
Total depth: 675 mm
Seat height: 460 a 560 mm
Seat width: 460 mm
Seat depth: from 460 to 500 mm



optional headrest

OPTIONAL ACCESSORIES





MATERIALS

TNK FLEX has been designed to be manufactured with recycled materials, danger substances such as chrome, mercury or cadmium are not used in big quantity. Recyclables Aluminium and Steel 100%. Organic volatile Components. Packages manufactured with recycled carton. Ink thinner free.



PRODUCTION

Energy use is optimized during the production process. Minimum environmental impact. Last generation technological system in coating processes. Painting that have not been used is recovered to use it again. Zero COVs emissions and other contaminant gas. Close water circuit to clean the metals. Heat recovery. Automatic manufacture systems. Cut process is planned.



TRANSPORT

Optimum packaging to reduce space in transport and save energy.



USE

Long lasting use. Spare parts and replacements available. Easy to clean and maintenance.



DISPOSAL

Recyclable. Easy and quick to split **TNK FLEX** components. Packages are reuse by our supplier to avoid waste generation. Carton used in packages is recyclable.

CERTIFICATES AND REFERENCES

The different programmes get points in different environmental categories to get the LEED certificate [sustainability, material and resources, water, energy and atmosphere, inner environment quality, innovation and design].



The mark of responsible forestry



PEFC Certificate



EN ISO 14006:2011
ECODISEÑO
Certificate



UNE-EN ISO 9001:2008
ISO 9001 Certificate



UNE-EN ISO 14001:2004
ISO 14001 Certificate

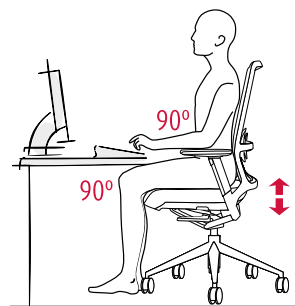


E1 Certificate by EN 13986

1 A correct posture at work to avoid physical problems.

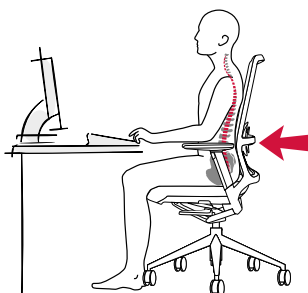
Seat adjustment.

Forearms must be parallel to the desk top as in a right angle with the rest of the arm. Both feet must be lean on the floor and knees must be in right angle too.



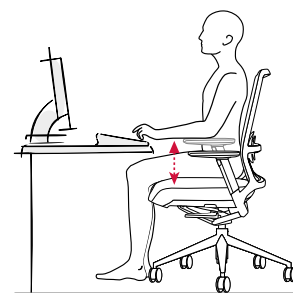
Adjustable arms (5 positions)

Place the chair arms in the lower position to get better mobility. For statics works, adjust height and distance to that point where the forearms perfectly lean.



Lumbar Support Adjustment

Adjust the Lumbar support height to get the back totally rested and the weight totally supported.



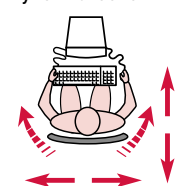
2 Different ergonomics conditions and specific mobility for each task.

It is necessary to alternate daily dynamic and static tasks.

Dynamic tasks.

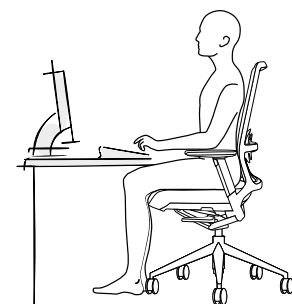
Document manipulation, communication and so on...Free the synchro mechanism and adjust weight and height. Place armrests in the lower position.

Dynamic tasks.



Static work

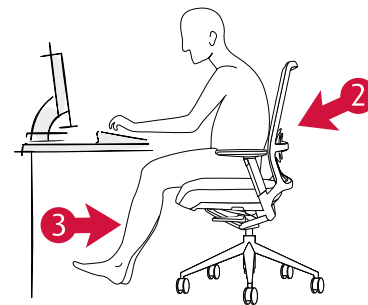
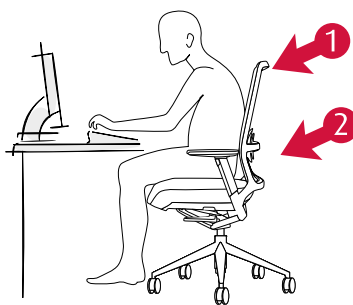
Document analysis and writing, intensive computer work... Blocked synchro mechanism and use armrests properly.



3 Incorrect Postures

Key points.

1. A lower position from the desk produces neck pain.
2. An incorrect back support produces lumbar problems.
3. Legs too stretched or too vended causes body joints over-stressed.



■ ERGONOMICS

TNK FLEX comfortably meets the mobility needs of all users , adapting smoothly to any position minimizing the user effort to maintain or change a position , all naturally and without the need for manual adjustment .

■ STANDARDS

TNK FLEX has passed tests done in our technical department as well as the tests done in AIDIMA the Technological Institute for furniture.

The tests correspond to:

Operative chairs standards applied since 2009

- UNE-EN 1335-1:01. Office Furniture. Office chair. Part 1: Dimensions.
- UNE-EN 1335-2:09. Office Furniture. Office Chair. Part 2: Security requirements
- UNE-EN 1335-2:09. Office Furniture. Office chair. Part 3: Security essays.

■ ECOLOGY

ENERGY SAVING

The new technological production system included, reduce the energy resources used to manufacture each component. Materials are very well used to avoid wastes.

RECYCLED AND RECYCABLE MATERIALS

ACTIU environmental policy opts to use recycled materials in those components where functionality and lasting is not a condition. Materials used in **TNK FLEX** such as Aluminium or Steel are totally recyclable.

■ REMARKABLE VALUES

1 - Programme designed, developed and totally manufactured by Actiu. Registered product as an European and International design.

2 - Synchro anti-tilt mechanisms patented by ACTIU.

Research and Development investment has allowed developing and manufacturing the inner mechanisms integrating each component in the design. The programme gets a unified aesthetics and reduces production costs.

3 - The result is an excellent COST-EFFECTIVE programme, totally guarantee which includes all necessary functions for an intensive use in offices as well as a very competitive price.

4 – Painting process:

Actiu painting plant has minimum environmental impact against the traditional industry processes.

Treatment is done by polarized coating and compacted with temperature. We get homogeneous and regular application with 98% of painting and the remaining 2% is used to produce other paints. Paints used are COVs free (Volatile Organic Components) which are very dangerous for the environment. All water used in the process is re-used, so we get zero dump. The process is free in heavy metal, phosphate, organic components and DQD (Biochemical demand of Oxygen). The program gives us an exact control of thickness, so it provides us with standard thickness (90 micron).