

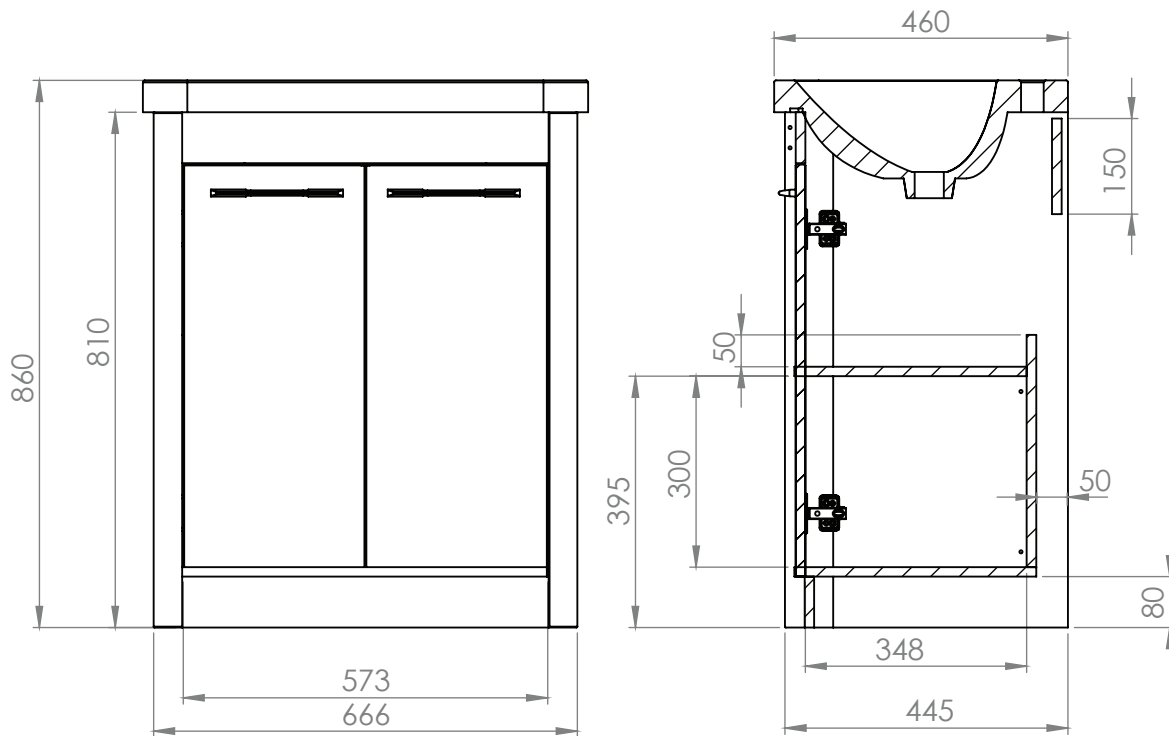
# Technical Data Sheet

## CONTOUR 700mm Floor Mounted Unit

Whats in the box: 1x CN7010.X



\*Reference basin TDS for further info



Diagrams not to scale  
All dimensions in mm  
tolerance of +/-5mm

### Materials

Carcass: 16mm Painted & Melamine Faced MDF

Fascia Components: 16mm Painted MDF

\*\*Dimensions are subject to change, customers are advised to measure actual product before commencing installation.

\*\*\*Fixing point dimensions are for guidance only/the positions of wall fixing must be checked when product is received.

### FAQs

- |  |   |
|--|---|
| Q: How big is the plumbing void?                       | A: 50mm.  |
| Q: Are the handles fitted?                             | A: No, handles need fixing. Holes are pre-drilled.                    |
| Q: How far apart are the hole centres for the handles? | A: 160mm.   |
| Q: Are the hinges soft close?                          | A: The hinges are both soft close and quick release.                  |
| Q: Can the doors be adjusted?                          | A: The doors can be adjusted as detailed in the supplied instructions |
| Q: How deep is the unit with doors open?               | A: Approx 730mm at 90°.   |
| Q: Is the shelf removable?                             | A: No, the shelf can't be removed.                                    |
| Q: What is the shelf capacity?                         | A: Shelf max depth: 348mm.  |
| Q: How many shelves are there?                         | A: There is one shelf and a base within the unit.                     |
| Q: Is the shelf adjustable?                            | A: No, the shelf is at a fixed position.                              |
| Q: What is the interior finish of the unit?            | A: The unit interior is the same finish as the exterior.              |

NOTE: Colours unique to Roper Rhodes - No RAL Code available