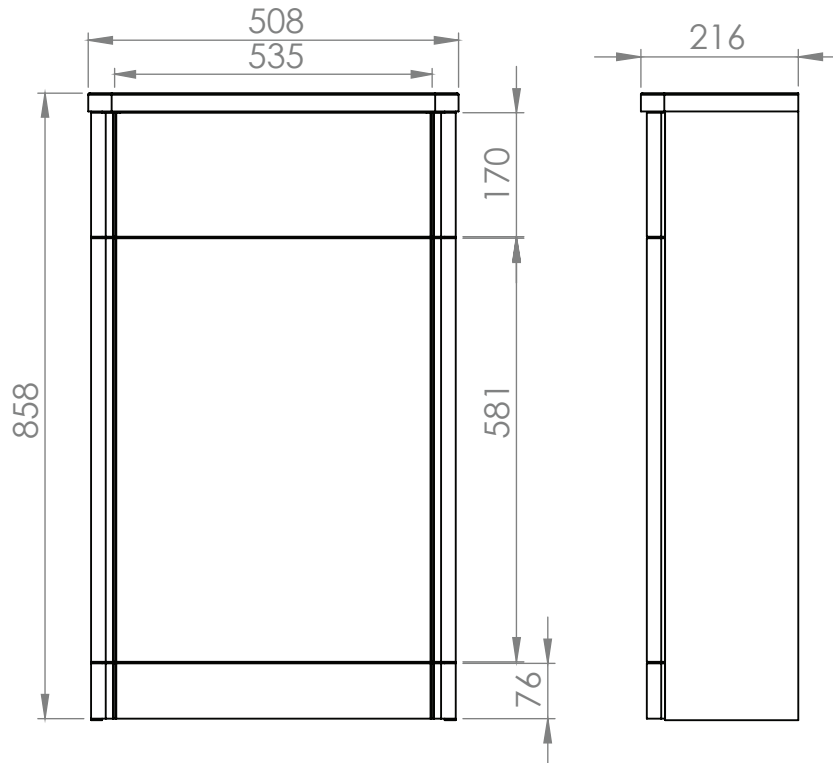


# Technical Data Sheet

## CONTOUR 500mm Slimline Back-To-Wall Unit

Whats in the box: 1x AM5626.X

R2



Diagrams not to scale  
All dimensions in mm  
tolerance of +/-5mm

### Materials

Carcass: 16mm Painted & Melamine Faced MDF

Fascia Components: 16mm Painted MDF

\*Dimensions are subject to change, customers are advised to measure actual product before commencing installation.

\*\*Fixing point dimensions are for guidance only/the positions of wall fixing must be checked when product is received.

### FAQs

- |   |  |
|---|--|
| Q: Are the fascias removable?                         | A: Yes, they are on quick release clips.   |
| Q: Can a wall hung frame be used inside the BTW unit? | A: No, see brochure.   |
| Q: Do the fascias come pre-drilled?                   | A: No, this must be done to suit the cistern / pan selected.   |
| Q: How do I fix the unit to the wall?                 | A: You can secure it to the wall drilling through the back brace using the pre-drilled holes.          |
| Q: What flush button can be used for this unit?       | A: All R2 branded flush buttons are suitable.  |
| Q: What cistern is a suitable size for this unit?     | A: All R2 branded cisterns are suitable for unit. Non branded products should be checked by installer. |

NOTE: Colours unique to Roper Rhodes - No RAL Code available