

# TECHNICAL DATA SHEET

## Serenity SCT STD Depth Basin - DC14002

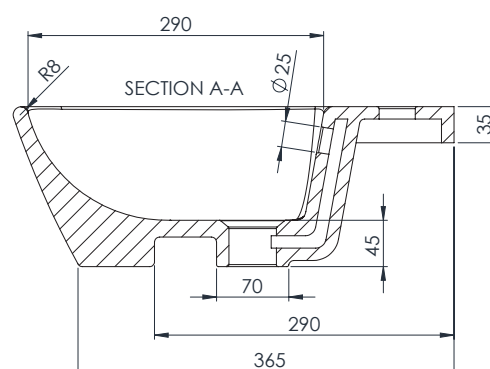
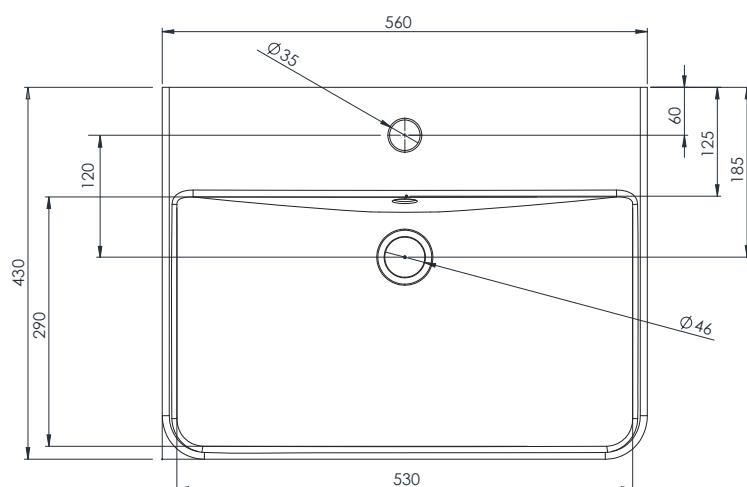
R2

NO.	Description	Product Code	Fixings included	Gross Weight	Net Weight
1	SCT STD Depth Basin	DC14002	N/A	17.25KG	N/A



### DIMENSIONS - PRODUCT CODE

DIAGRAMS NOT TO SCALE | ALL DIMENSIONS IN MM | TOLERANCE OF  $\pm 5$ MM  
ALL PRODUCTS CONFORM TO THE BRITISH FIXING STANDARDS



\*Dimensions are subject to change, customers are advised to measure actual product before commencing installation.

\*\*Fixing point dimensions are for guidance only/the positions of wall fixing must be checked when product is received.

### FAQs

Q - Is a fitting template supplied?

A - Yes

Q - How is the basin fixed to the furniture?

A - Fix to workspace with silicone as per instructions supplied.

Key Dimensions Descriptions	Key Dimensions (mm)
Internal Depth	115mm
Internal Front to Back	290mm
Internal Left to Right	530mm
Tapledge	125mm
Taphole Centre to Waste Centre	120mm
Taphole Centre to Back of Basin	60mm
Waste Centre to Back of Basin	185mm
Height of Rear Basin	130mm
Basin Belly	N/A

# TECHNICAL DATA SHEET

## Serenity SCT Slim Depth Basin - DC14003

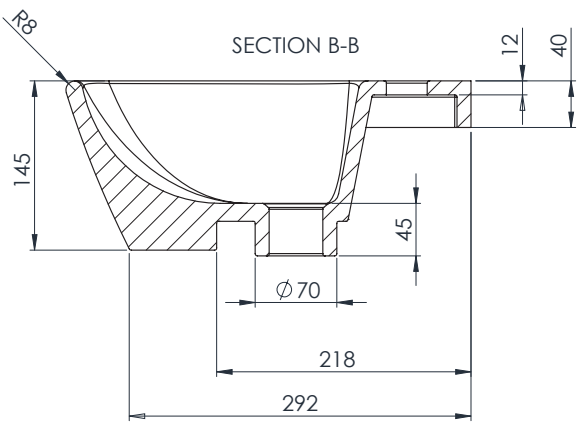
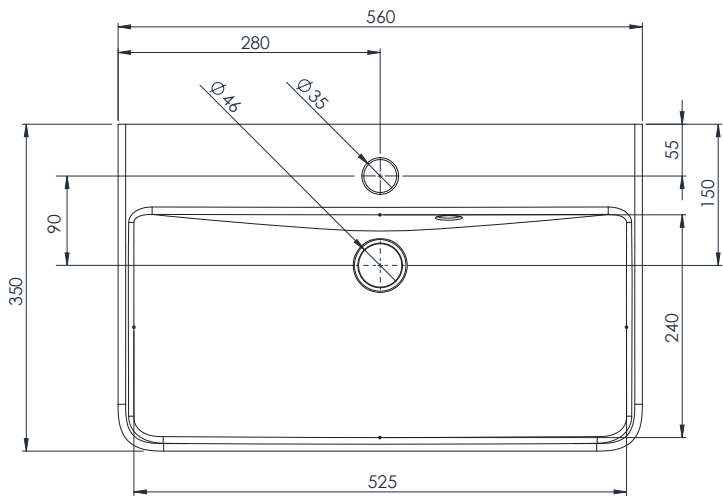


NO.	Description	Product Code	Fixings included	Gross Weight	Net Weight
1	SCT Slim Depth Basin	DC14003	N/A	15.6KG	N/A



### DIMENSIONS - PRODUCT CODE

DIAGRAMS NOT TO SCALE | ALL DIMENSIONS IN MM | TOLERANCE OF  $\pm 5$ MM  
ALL PRODUCTS CONFORM TO THE BRITISH FIXING STANDARDS



\*Dimensions are subject to change, customers are advised to measure actual product before commencing installation.  
\*\*Fixing point dimensions are for guidance only/the positions of wall fixing must be checked when product is received.

### FAQs

- Q - Is a fitting template supplied?  
A - Yes
- Q - How is the basin fixed to the furniture?  
A - Fix to workspace with silicone as per instructions supplied.

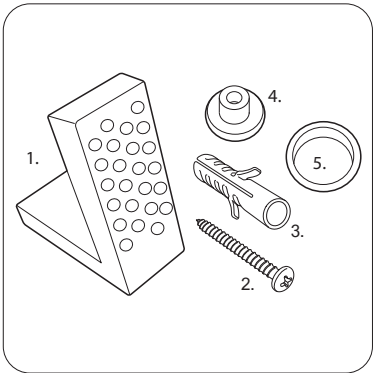
Key Dimensions Descriptions	Key Dimensions (mm)
Internal Depth	110mm
Internal Front to Back	240mm
Internal Left to Right	525mm
Tapledge	100mm
Taphole Centre to Waste Centre	90mm
Taphole Centre to Back of Basin	60mm
Waste Centre to Back of Basin	150mm
Height of Rear Basin	135mm
Basin Belly	N/A

# TECHNICAL DATA SHEET

## Serenity CC Open Back Pan - SN620CCP

R2

NO.	Description	Product Code	Fixings included	Gross Weight	Net Weight
1	CC Tank	SN63CCC	YES	13.5KG	N/A
2	Soft Close Wrap Over Seat	SNSCTS	YES	2.7KG	N/A
3	CC Open Back Pan	SN620CCP	YES	TBC	N/A

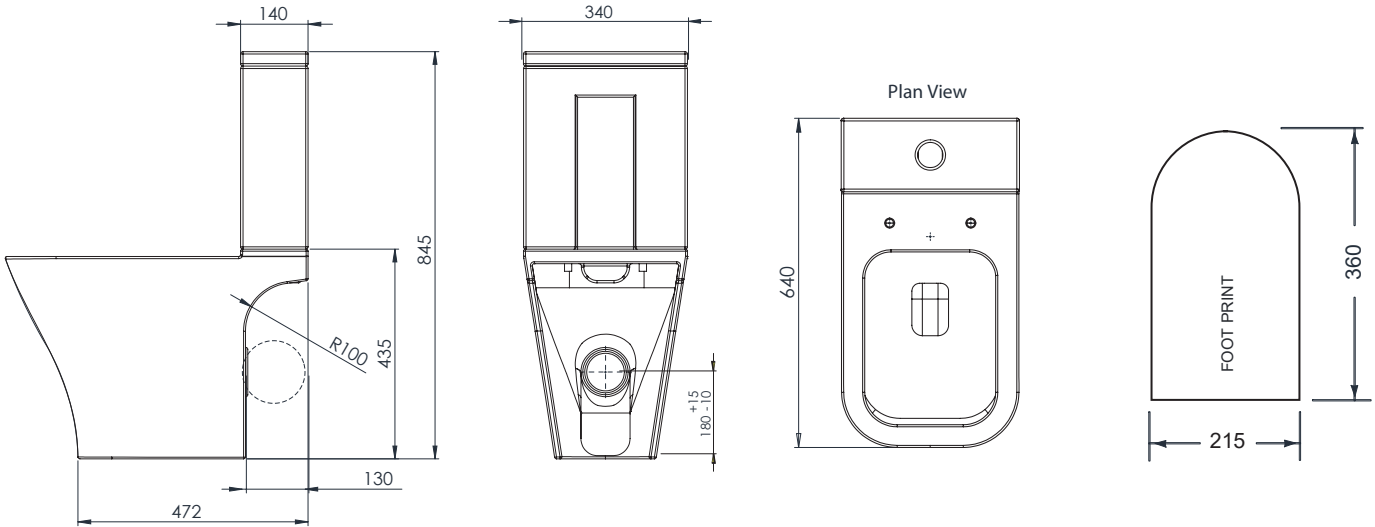


- 1. 2x Nylon Floor Bracket
- 2. 4x Stainless Steel Screws
- 3. 2x Nylon Screw Plugs
- 4. 2x Nylon Screw Collars
- 5. 2x Nylon Collars Caps (Metalic Finish)

Spare Code: SP14211

### DIMENSIONS - PRODUCT CODE

DIAGRAMS NOT TO SCALE | ALL DIMENSIONS IN MM | TOLERANCE OF  $\pm 5$ MM  
ALL PROCUKTS CONFORM TO THE BRITISH FIXING STANDARDS



\*Dimensions are subject to change, customers are advised to measure actual product before commencing installation.  
\*\*Fixing point dimensions are for guidance only/the positions of wall fixing must be checked when product is received.

### FAQs

- Q - Where is the inlet valve?  
A - Bottom inlet, back right of the pan.
- Q - What is the flush volume?  
A - 6/4L
- Q - Can this pan be used with a side connection outlet pipe?  
A - Yes.
- Q - What cistern fittings are included?  
A - R+T - Refer to cistern fitting tech data sheet.
- Q - Are there any other compatible seats?  
A - No

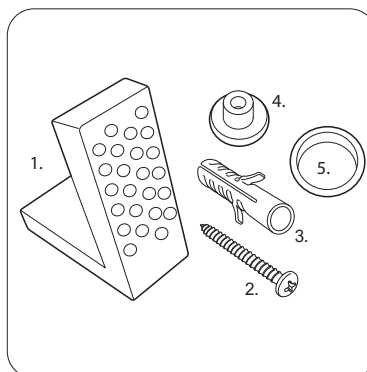
Key Dimensions Descriptions	Key Dimensions (mm)
Front to Back Footprint	360mm
Left to Right Footprint	215mm
Bowl Front to Back	335mm
Bowl Left to Right	250mm
Pan Height	420mm
Pan Overall Front to Back	640mm
Centre Waste Outlet to Floor	170mm
Width of Void	155mm
Is there a Ceramic Brace Bar	No

# TECHNICAL DATA SHEET

## Serenity CC Fully Enclosed Pan - SN620CFP

R2

NO.	Description	Product Code	Fixings included	Gross Weight	Net Weight
1	CC Tank	SN63CCC	YES	13.5KG	N/A
2	Soft Close Wrap Over Seat	SNSCTS	YES	2.7KG	N/A
3	CC Fully Enclosed Pan	SN620CFP	YES	34.3KG	N/A

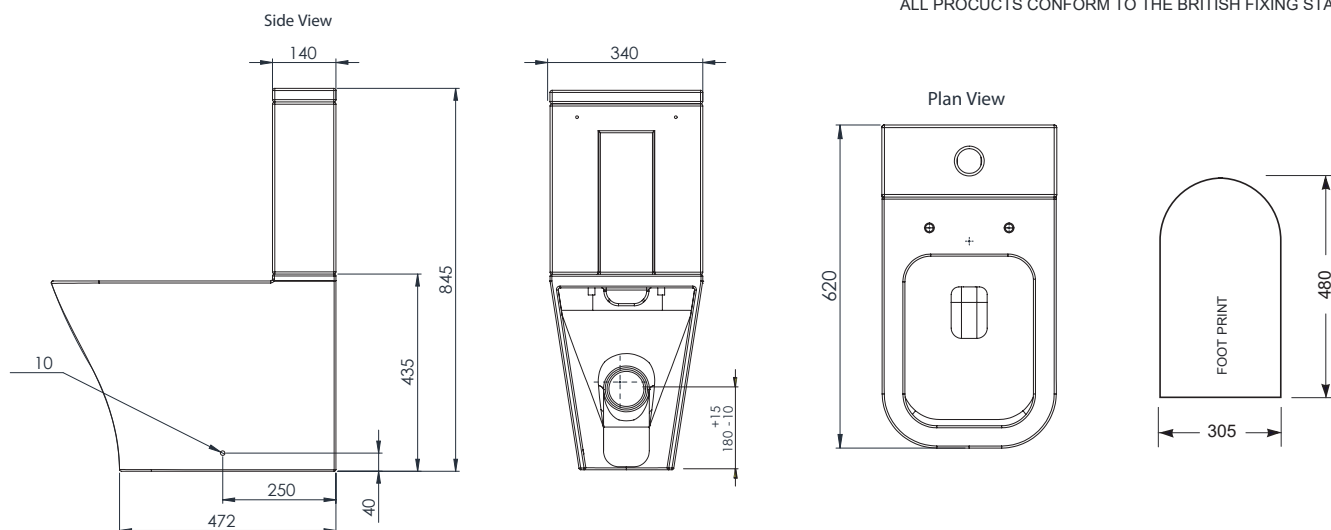


- 1. 2x Nylon Floor Bracket
- 2. 4x Stainless Steel Screws
- 3. 2x Nylon Screw Plugs
- 4. 2x Nylon Screw Collars
- 5. 2x Nylon Collars Caps (Metalic Finish)

Spare Code: SP14211

### DIMENSIONS - PRODUCT CODE

DIAGRAMS NOT TO SCALE | ALL DIMENSIONS IN MM | TOLERANCE OF  $\pm 5$ MM  
ALL PRODUCTS CONFORM TO THE BRITISH FIXING STANDARDS



\*Dimensions are subject to change, customers are advised to measure actual product before commencing installation.

\*\*Fixing point dimensions are for guidance only/the positions of wall fixing must be checked when product is received.

### FAQs

Q - Where is the inlet valve?  
A - Bottom inlet, back right of the pan.

Q - What is the flush volume?  
A - 6/4L

Q - Can this pan be used with a side connection outlet pipe?  
A - No

Q - What cistern fittings are included?  
A - R + T - Refer to cistern fitting tech data sheet.

Q - Are there any other compatible seats?  
A - No

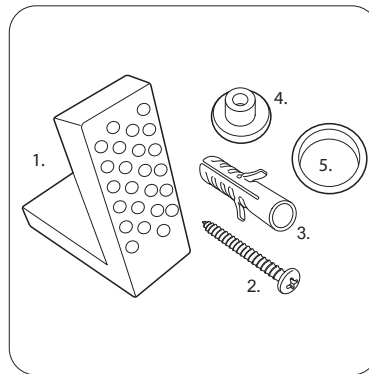
Key Dimensions Descriptions	Key Dimensions (mm)
Front to Back Footprint	480mm
Left to Right Footprint	305mm
Bowl Front to Back	335mm
Bowl Left to Right	250mm
Pan Height	425mm
Pan Overall Front to Back	625mm
Centre Waste Outlet to Floor	185mm
Width of Void	155mm
Is there a Ceramic Brace Bar	No

# TECHNICAL DATA SHEET

## Serenity BTW Pan - SN490BTW

R2

NO.	Description	Product Code	Fixings included	Gross Weight	Net Weight
1	Soft Close Wrap Over Seat	SNSCTS	YES	2.7KG	N/A
2	BTW Pan	SN490BTW	YES	28.75KG	N/A

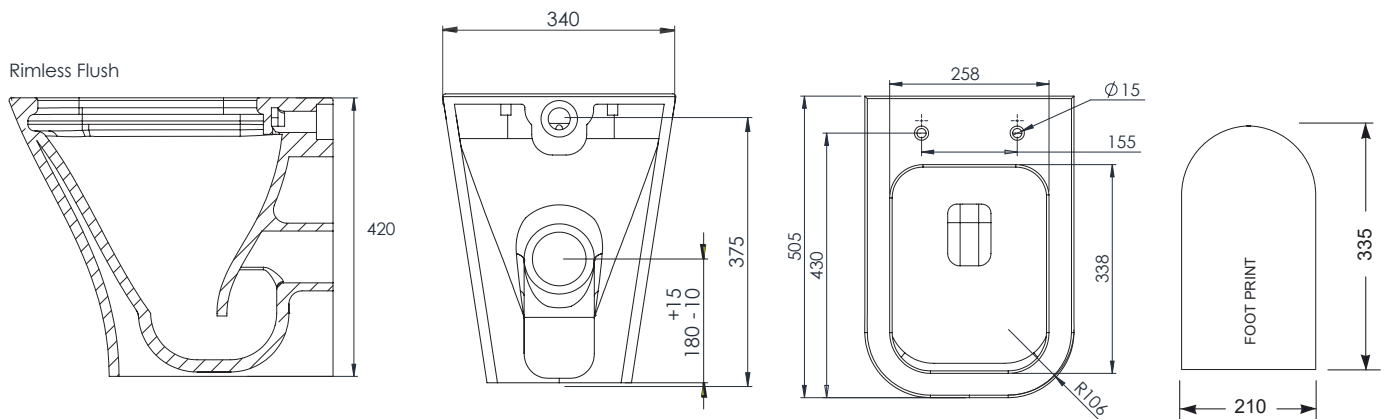


- 1. 2x Nylon Floor Bracket
- 2. 4x Stainless Steel Screws
- 3. 2x Nylon Screw Plugs
- 4. 2x Nylon Screw Collars
- 5. 2x Nylon Collars Caps (Metalic Finish)

Spare Code: SP14211

### DIMENSIONS - PRODUCT CODE

DIAGRAMS NOT TO SCALE | ALL DIMENSIONS IN MM | TOLERANCE OF  $\pm 5$ MM  
ALL PRODUCTS CONFORM TO THE BRITISH FIXING STANDARDS



\*Dimensions are subject to change, customers are advised to measure actual product before commencing installation.

\*\*Fixing point dimensions are for guidance only/the positions of wall fixing must be checked when product is received.

### FAQs

Q - Are there any other compatible seats?

A - No

Q - Which concealed cistern do I use?

A - Torrent (TR9001) or Cascade (TR9002), depending on whether the water feed is bottom or side access.

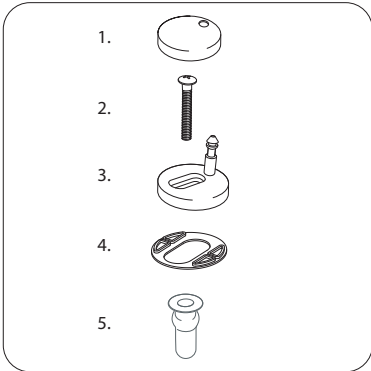
Key Dimensions Descriptions	Key Dimensions (mm)
Front to Back Footprint	335mm
Left to Right Footprint	210mm
Bowl Front to Back	338mm
Bowl Left to Right	258mm
Pan Height	420mm
Pan Overall front to Back	505mm
Centre Flush Inlet to Floor	375mm
Centre Waste Outlet to Floor	180mm
Width of Void	180mm
Is there a Ceramic Brace Bar	No

# TECHNICAL DATA SHEET

## Serenity Soft Close Wrap Over Seat - SNSCTS

R2

NO.	Description	Product Code	Fixings included	Gross Weight	Net Weight
1	Soft Close Wrap Over Seat	SNSCTS	YES	2.7KG	N/A

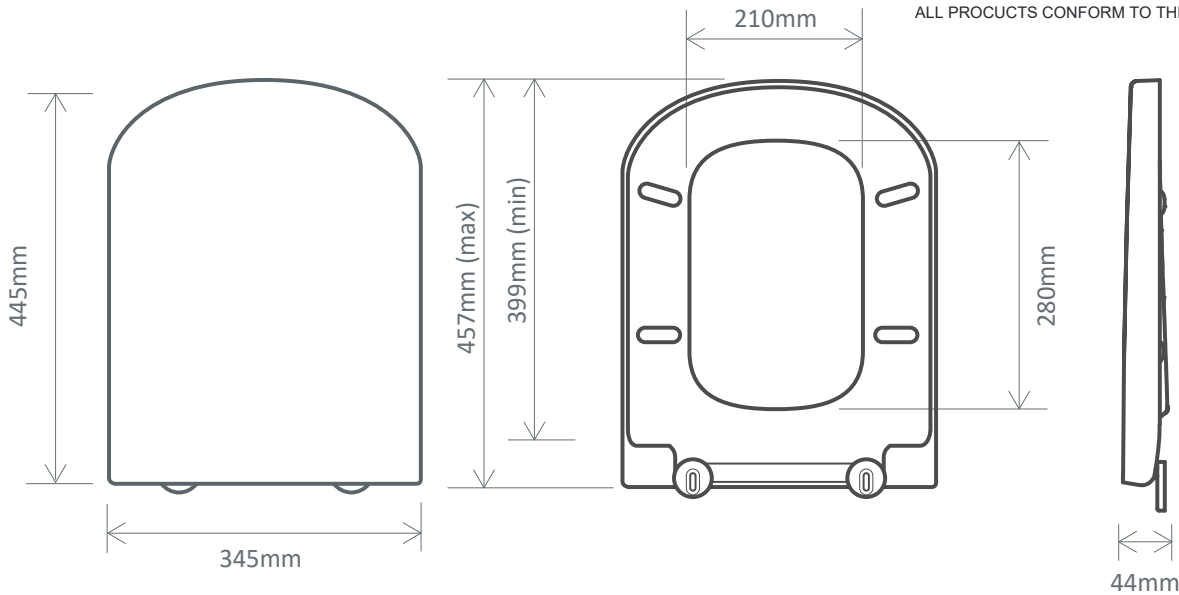


- 1. 2x ø35mm Stainless Steel Cover Plates
- 2. 2x Stainless Steel Screws M8 x 34mm
- 3. 2x ø35mm Black Nylon Anchor Plates
- 4. 2x Clear Polymer Sealing Washers
- 4. 2x Black Rubber Top Fix Plugs with M8 Brass Thread Inserts

Spare Codes: Hinge Fixings - SP17851,  
Lid Buffer - SP17853, Ring Buffer - SP17852

### DIMENSIONS - PRODUCT CODE

DIAGRAMS NOT TO SCALE | ALL DIMENSIONS IN MM | TOLERANCE OF ± 5MM  
ALL PRODUCTS CONFORM TO THE BRITISH FIXING STANDARDS



\*Dimensions are subject to change, customers are advised to measure actual product before commencing installation.  
\*\*Fixing point dimensions are for guidance only/the positions of wall fixing must be checked when product is received.

### FAQs

- Q - What's the maximum test load of the seat?  
A - 150kg
- Q - What are the fixings made from?  
A - Stainless Steel Cover Plates/Screws, Nylon Anchor Plates, Rubber Washers, Rubber Fixing Plugs.

Key Dimensions Descriptions	Key Dimensions (mm)
Seat/Lid Front to Back	445mm
Seat/Lid Left to Right	345mm
Ring Hole Front to Back	280mm
Ring Hole Left to Right	210mm
Seat Overall Thickness	45mm
Width of Back of Seat	346mm
Min/Max Adjustment for Fixings	399/457