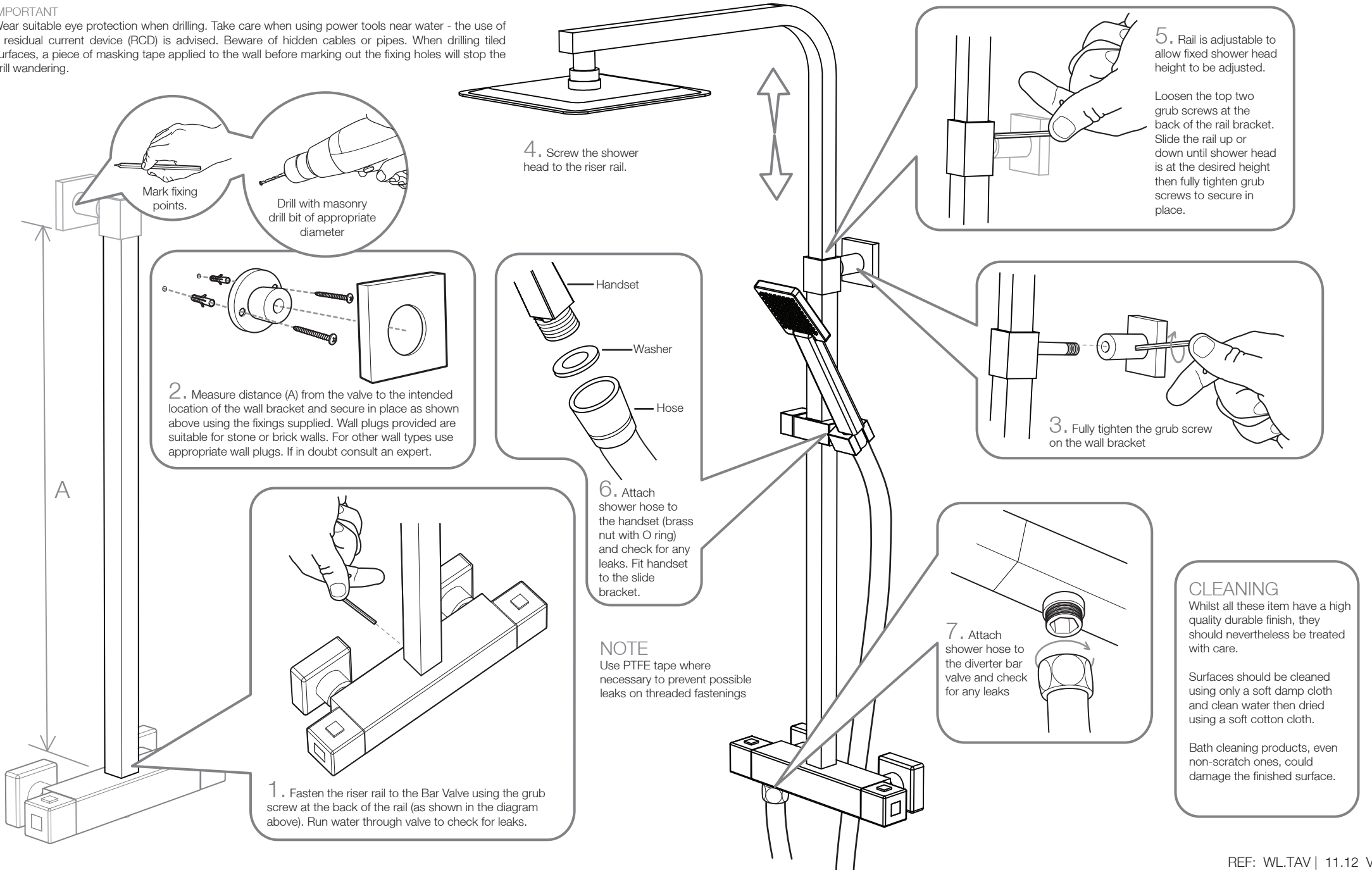


IMPORTANT

Wear suitable eye protection when drilling. Take care when using power tools near water - the use of a residual current device (RCD) is advised. Beware of hidden cables or pipes. When drilling tiled surfaces, a piece of masking tape applied to the wall before marking out the fixing holes will stop the drill wandering.



Mark fixing points.

Drill with masonry drill bit of appropriate diameter

2. Measure distance (A) from the valve to the intended location of the wall bracket and secure in place as shown above using the fixings supplied. Wall plugs provided are suitable for stone or brick walls. For other wall types use appropriate wall plugs. If in doubt consult an expert.

Handset

Washer

Hose

1. Fasten the riser rail to the Bar Valve using the grub screw at the back of the rail (as shown in the diagram above). Run water through valve to check for leaks.

4. Screw the shower head to the riser rail.

6. Attach shower hose to the handset (brass nut with O ring) and check for any leaks. Fit handset to the slide bracket.

5. Rail is adjustable to allow fixed shower head height to be adjusted.

Loosen the top two grub screws at the back of the rail bracket. Slide the rail up or down until shower head is at the desired height then fully tighten grub screws to secure in place.

3. Fully tighten the grub screw on the wall bracket

7. Attach shower hose to the diverter bar valve and check for any leaks

NOTE
Use PTFE tape where necessary to prevent possible leaks on threaded fastenings

CLEANING
Whilst all these items have a high quality durable finish, they should nevertheless be treated with care.

Surfaces should be cleaned using only a soft damp cloth and clean water then dried using a soft cotton cloth.

Bath cleaning products, even non-scratch ones, could damage the finished surface.