

**R4)** Before installing the cabinet into a recess ensure the construction of the partition wall is correct. The studs and noggins need to be suitably spaced to allow the cabinet to fit easily into the recess and must be square. Please measure height and width according to diagram on page 5. The stud wall will need to support the weight of the cabinet whilst the screws will secure it in place.

**R5)** Electrical connections need to be made before the cabinet is in place inside the recess. A second person may be required to hold the cabinet while this is done. Before making any electrical connections (or performing any maintenance) it is necessary to turn off the mains electricity supply. This unit is provided with a supply cable already fitted. This cable should be fitted to the household lighting circuit or to a fused 3 AMP supply. Connections should be made in accordance with the latest IEE regulations. This cabinet is manufactured to CLASS 1 and requires an earth connection.

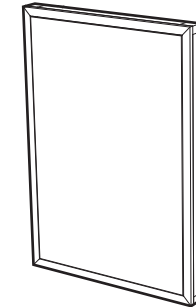
**R6)** With the door and hinge assembly still removed, position the cabinet into the recess. Check the cabinet is level with a spirit level. It is recommended to mark the screw locations through the holes and drill pilot holes into the framework, then screw into the studs through the 2 fixing points (see previous step) using suitable screws for the framework. To ensure the cabinet sits correctly in the framework do not tighten one side fully before the other. Instead, gradually tighten the 2 screws alternately until both are fully secure, checking that the cabinet is level once complete.

**R7)** When the cabinet is fully secure restore the mains power and test the function of the lights and the shaver socket. If the light fails to function properly it is likely the IR sensor has been positioned too close to an adjacent surface.

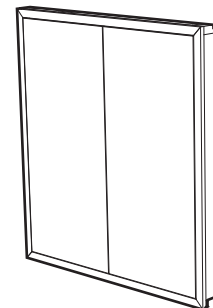
**R8)** Fitting the glass shelves. Firstly insert a shelf into the top two shelf support brackets then slide upwards so the grub screws on the underside of the support brackets (Screw C) can be sufficiently tightened to hold glass in place. Repeat for the bottom shelf (NOTE: be careful not to overtighten). Shelves can be positioned accordingly by sliding the supports up or down (NOTE: Take care to use both hands when sliding shelves and ensure that support brackets at both ends slide simultaneously). Once shelves are in their desired locations turn screw D to secure in position. A spirit level should be used to ensure shelves are level.

**R9)** Refit the hinge and door assembly. If the doors are out of alignment first remove the cover cap which clips into the main hinge body. The soft-close hinges offer adjustment in 3 directions via adjustment screws E, F and G (see diagram on page 4).

NO50AL



NO65AL



ELECTRICAL SAFETY

INSTRUCTIONS (Applicable to UK Installations only)

All fittings must be installed by a competent person, in accordance with current IEE wiring regulations. If in doubt consult a qualified electrician.

IMPORTANT

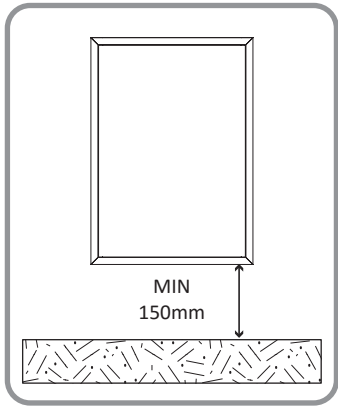
Always switch off the electrical supply at the mains during installation and maintenance. It is recommended that the fuse is withdrawn or the circuit breaker is switched off for the necessary circuit before installation commences.

INSTALLATION CARE & SAFETY

Wear suitable eye protection when drilling. Take care when using power tools near water - the use of a residual current device (RCD) is advised. Beware of hidden cables or pipes. Take care if drilling on tiled surfaces in case the drill slips. A piece of masking tape applied to the wall before marking out the fixing holes will stop the drill from wandering.

IMPORTANT

The product must be installed with a minimum distance of 150mm between the infrared sensor and an adjacent basin, surface or obstruction to ensure correct function of the sensor (see diagram below).



DO NOT strike glass components with hard or pointed items. DO NOT place very hot or very cold items against or in close proximity to glass surfaces unless an adequately thick insulation material is used to prevent such items coming in contact with the glass.

The nominal thickness of the mirror glass used in this product is 6mm (3mm double sided) and is film backed for safety. If the glass becomes chipped or broken replace immediately. For replacement glass and other components contact customer services at the address below.

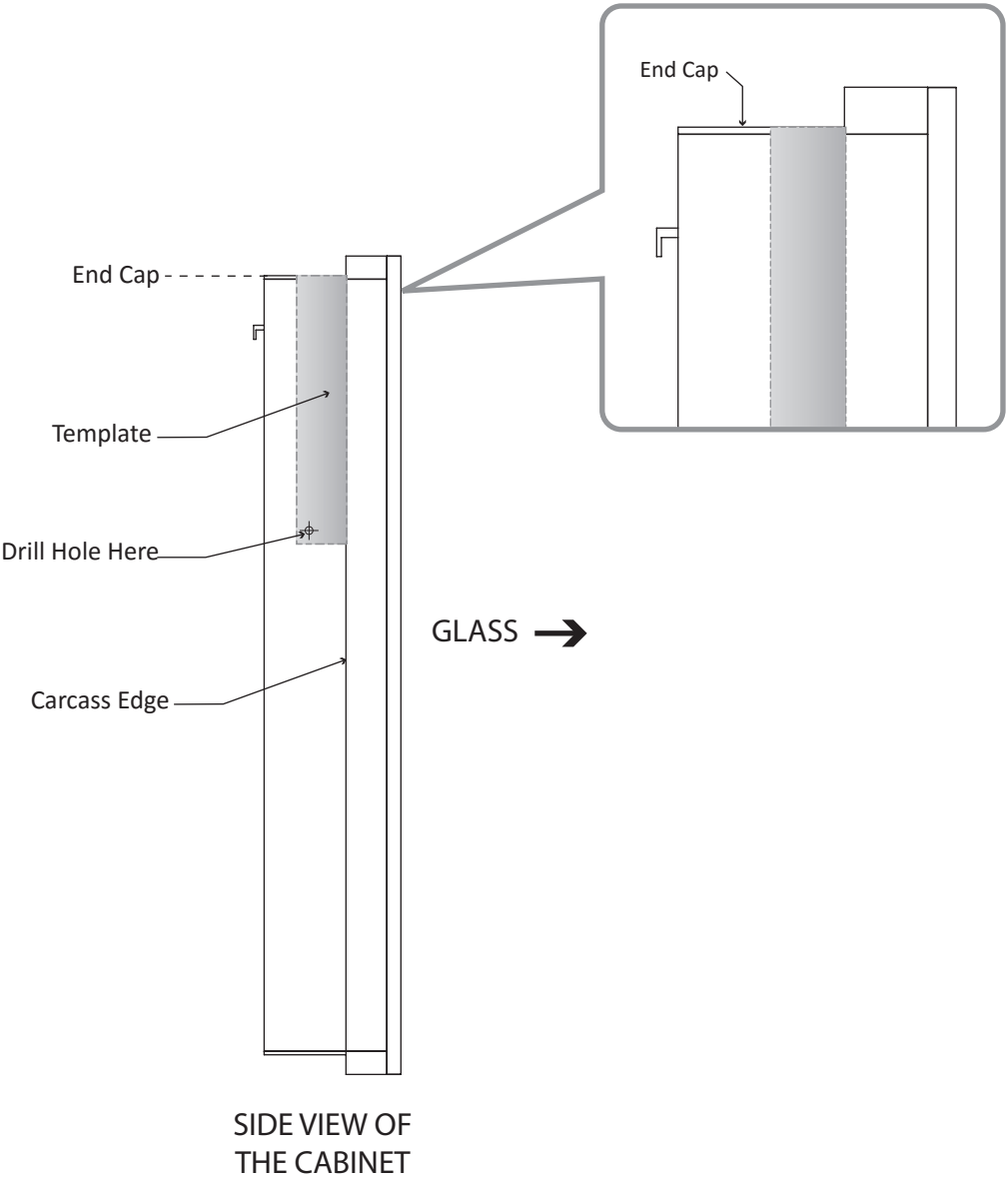
CLEANING

It is recommended that the unit is cleaned with a soft, dry, non abrasive cloth when turned off. Never use cleaning agents or abrasive materials on any type of surface finish. Do not allow moisture to come into contact with the electrical components.

**R2)** Two additional holes need to be drilled through the outside of the cabinet carcass, one on each side, in-line with the pilot holes. Cut out the templates provided noting the left and right designation. Position the templates provided as shown below making sure the edges are flush against the inner edge of the carcass and the top face of the end cap.

**R3)** Mark the hole position on each side of the cabinet at the corner of the template.

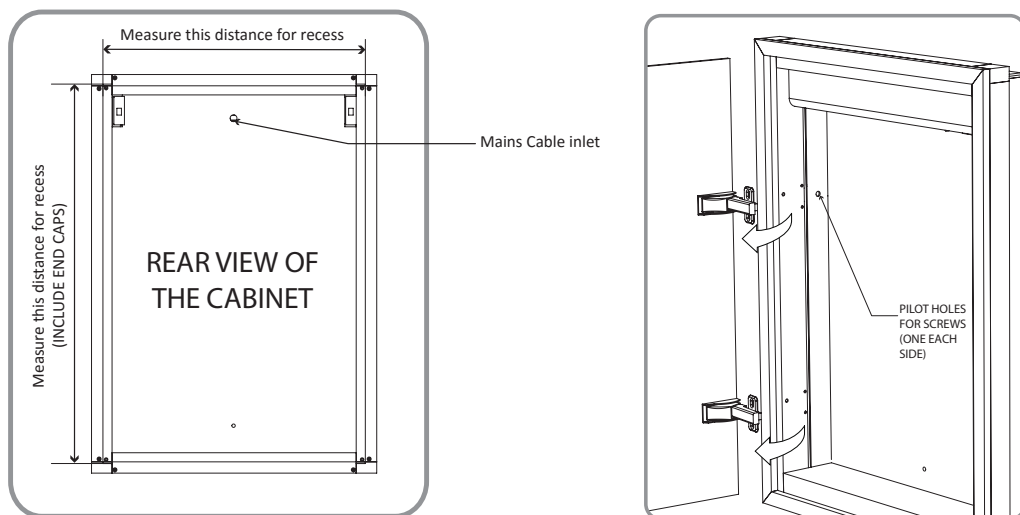
Continued overleaf.



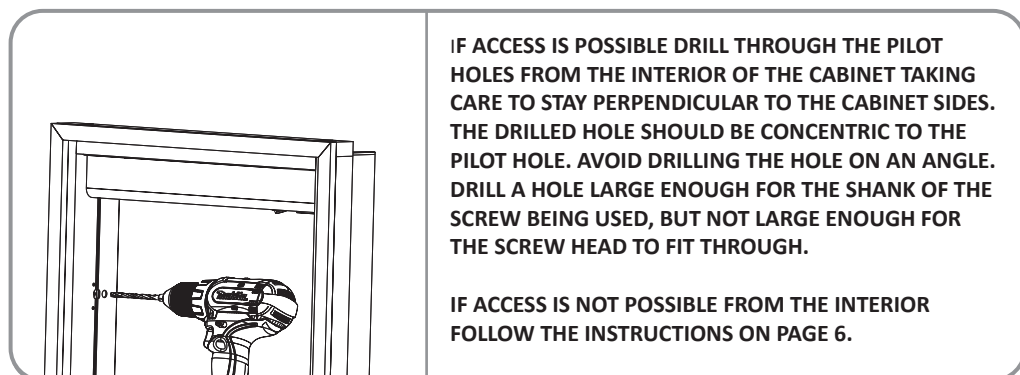
## Installation Procedure - Recessed into Wall

**NOTE: THE FRAMEWORK WHICH WILL SEAT THE RECESSED CABINET MUST BE STRAIGHT AND SQUARE TO ENSURE SUCCESSFUL INSTALLATION AND TO PREVENT DAMAGE TO THE CABINET. IF IN DOUBT CONSULT A PROFESSIONAL FITTER.**

**IMPORTANT: THE PRODUCT MUST BE INSTALLED WITH A MINIMUM DISTANCE OF 150MM BETWEEN THE INFRARED SENSOR AND AN ADJACENT BASIN, SURFACE OR OBSTRUCTION TO ENSURE CORRECT FUNCTION OF THE SENSOR (SEE DIAGRAM ON PAGE 1). THIS MUST BE TAKEN INTO ACCOUNT WHEN CREATING THE RECESS.**

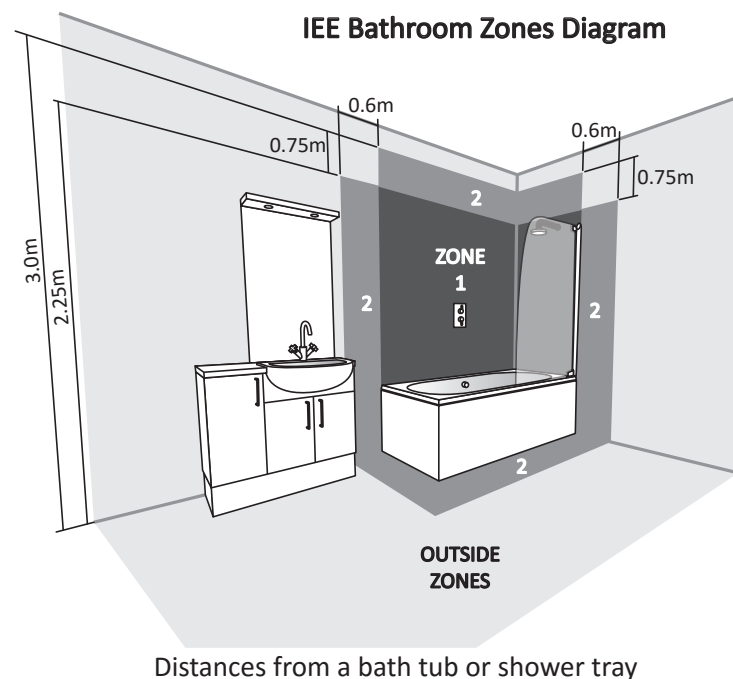


**R1)** In order to secure the cabinet in a recess, a 10mm hole has been pre-drilled on each of the inside faces of the cabinet to accept screws that will secure into the framework (use screws that are suitable for the framework). These fixing points are concealed behind the upper hinge locations so the hinges and door(s) will need to be removed before installation. Unscrew the hinge and door assembly and keep the screws in a safe place. It may also be useful to remove the shelf brackets.



**IF ACCESS IS POSSIBLE DRILL THROUGH THE PILOT HOLES FROM THE INTERIOR OF THE CABINET TAKING CARE TO STAY PERPENDICULAR TO THE CABINET SIDES. THE DRILLED HOLE SHOULD BE CONCENTRIC TO THE PILOT HOLE. AVOID DRILLING THE HOLE ON AN ANGLE. DRILL A HOLE LARGE ENOUGH FOR THE SHANK OF THE SCREW BEING USED, BUT NOT LARGE ENOUGH FOR THE SCREW HEAD TO FIT THROUGH.**

**IF ACCESS IS NOT POSSIBLE FROM THE INTERIOR FOLLOW THE INSTRUCTIONS ON PAGE 6.**



Fitting in Bathrooms is subject to the appropriate zone in accordance with IEE Regulations. This product is suitable for outside zones. It is NOT suitable for installation in Zone 0 and Zone 1. It is also not suitable for installation in saunas, steam rooms or shower cubicles. This product is only suitable for permanent installation. DO NOT connect to a trailing plug and socket outlet. This product is only suitable for indoor use. Do not attach the product to surfaces that are damp or otherwise electrically conductive.

### COMPLIANCE

This product complies with the following safety standards:

BS EN 60598-1: 2004, EN 60598-2-1: 1989, BS EN 60598-2-2: 1997 & Amd 1. BS EN 14749: (2005), IP44 rated in accordance with BS60529:1992 & (BS EN 60068-2-18:2001)

### WIRING

This product is manufactured to class I category and must have an earth connection.

#### COLOUR CODING:

L - Live = Brown

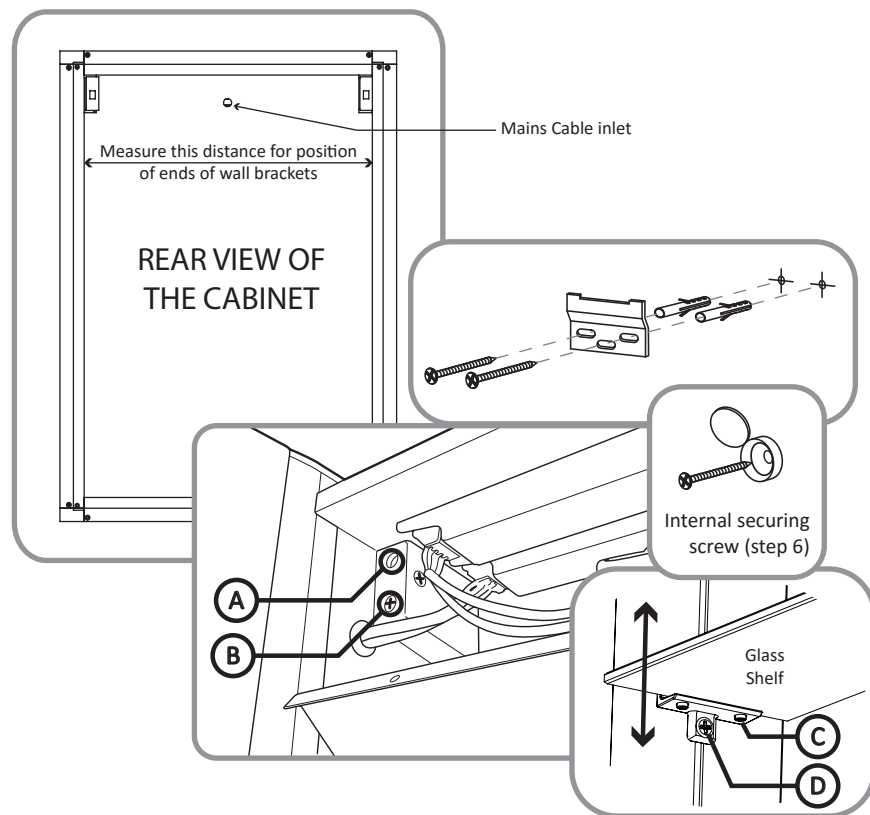
N - Neutral = Blue

⊕ - Earth = Green & Yellow

### MAINTENANCE

If the LED strip fails, for replacements please contact the Tavistock sales office using the contact details on the back page, stating the cabinet model and product code.

## Installation Procedure - Wall Mounting (non recessed)



### IMPORTANT

The product must be installed with a minimum distance of 150mm between the infrared sensor and an adjacent basin, surface or obstruction to ensure correct function of the sensor (see diagram on page 1).

This product can be installed normally or recessed into a partition wall. This first section describes a wall mounted installation

**W1)** Remove the packaging taking special care with the doors and separate shelves. Open the cabinet doors and ensuring you haven't connected the power remove the screws on the front edge and lower the cover. Take care not to lose the screws.

**W2)** Using a spirit level, mark off a horizontal line approximately 50mm below where the top of the cabinet is to be. Position the bracket hole centres so that they are centred on the line, and ensure that the ends of the brackets are spaced to the width between the inner edges of the vertical aluminium extrusions (see illustration). Mark off the holes using a pencil.

**W3)** Note: Wall plugs supplied are only suitable for solid stone / brick walls. For plasterboard walls use specialist wall plugs, available from DIY or hardware stores. Seek advice from a specialist about the suitability of fixings to be used. Drill the required holes and insert wall plugs.

**W4)** Screw the brackets to the wall using the screws provided. Please ensure the screws are fully tight but take care not to overtighten. Two screws must be used in each bracket.

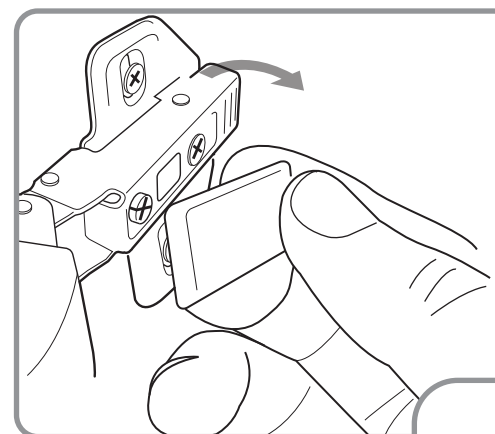
**W5)** Before making any electrical connections (or performing any maintenance) it is necessary to turn off the mains electricity supply. This unit is provided with a supply cable already fitted. This cable should be fitted to the household lighting circuit or to a fused 3 AMP supply. Connections should be made in accordance with the latest IEE regulations. This cabinet is manufactured to CLASS 1 and requires an earth connection.

**W6)** Hang the cabinet on the wall brackets. The claws on the cabinet hangers must be securely located on the wall brackets. Using a spirit level adjust the angle of the cabinet by turning screw A with a cross head screwdriver. When the angle is properly adjusted, screw through the lower section of the cabinet backboard and mark the wall. Remove the cabinet from the wall, drill a suitable hole in the marked location and fit a wall plug. Re-hang the cabinet making sure to tighten screw B on both hangers and secure the base of the cabinet to the wall with the supplied screw and cover-cap. The cabinet should not be left unattended until it is fully secure.

**W7)** When the cabinet is fully secure the internal top cover should be closed and secured with the 3 small screws removed earlier. When the cover is closed and secure restore the mains power and test the function of the lights and the shaver socket. If the light fails to function properly it is likely the IR sensor has been positioned too close to an adjacent surface

**W8)** Fitting the glass shelves. Firstly insert a shelf into the top two shelf support brackets then slide upwards so the grub screws on the underside of the support brackets (Screw C) can be sufficiently tightened to hold glass in place. Repeat for the bottom shelf (NOTE: be careful not to overtighten). Shelves can be positioned accordingly by sliding the supports up or down (NOTE: Take care to use both hands when sliding shelves and ensure that support brackets at both ends slide simultaneously). Once shelves are in their desired locations turn screw D to secure in position. A spirit level should be used to ensure shelves are level.

**W9)** If the doors are out of alignment first remove the cover cap which clips into the main hinge body. The soft-close hinges offer adjustment in 3 directions via adjustment screws E, F and G (see diagram).



### HINGE ADJUSTMENT

