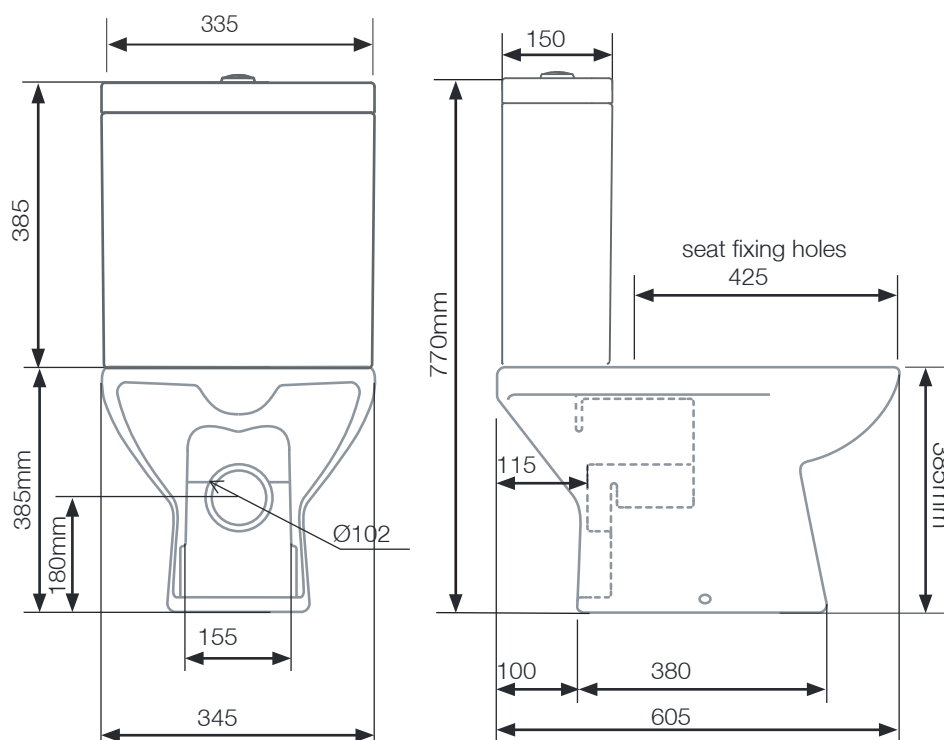
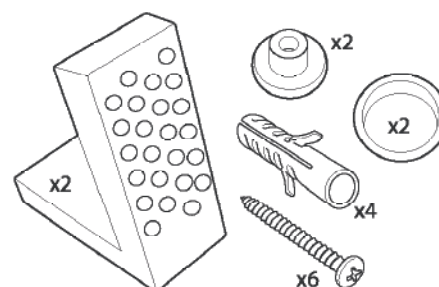


No.	Description	Product Code	Fixings included	Gross Weight
1	Ion Cistern inc. Flush Fitting & Lid	C150S	Yes	14.3kg
2	Ion Soft Close Toilet Seat	TS150S	Yes	2.5kg
3	Micra Short Projection WC Pan	P100S	Yes	23.45kg



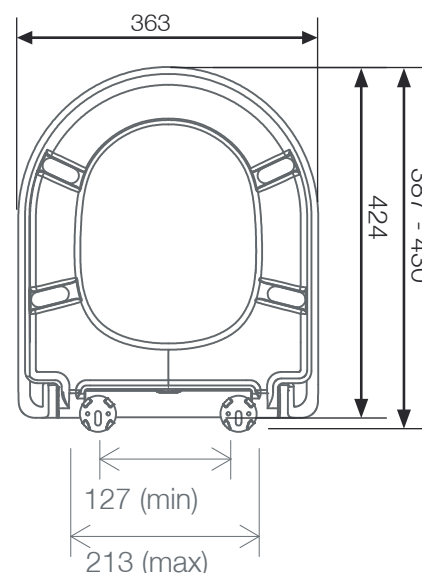
Cistern Settings:
Full Flush Volume: 6L
Reduced Flush Volume: 4L

Floor Fixing Kit:



DIAGRAMS NOT TO SCALE
ALL DIMENSIONS IN MM

TOLERANCE OF ± 5 MM



FAQ's
What side is the inlet located? Right hand side
Are there any other compatible seats? Yes, Micra seat TS100WSC
Can this pan be used with a side connection outlet pipe? Yes
The cistern lid won't shut/the cistern isn't working correctly. **Ensure the inlet and flush valves are set to the correct heights.**

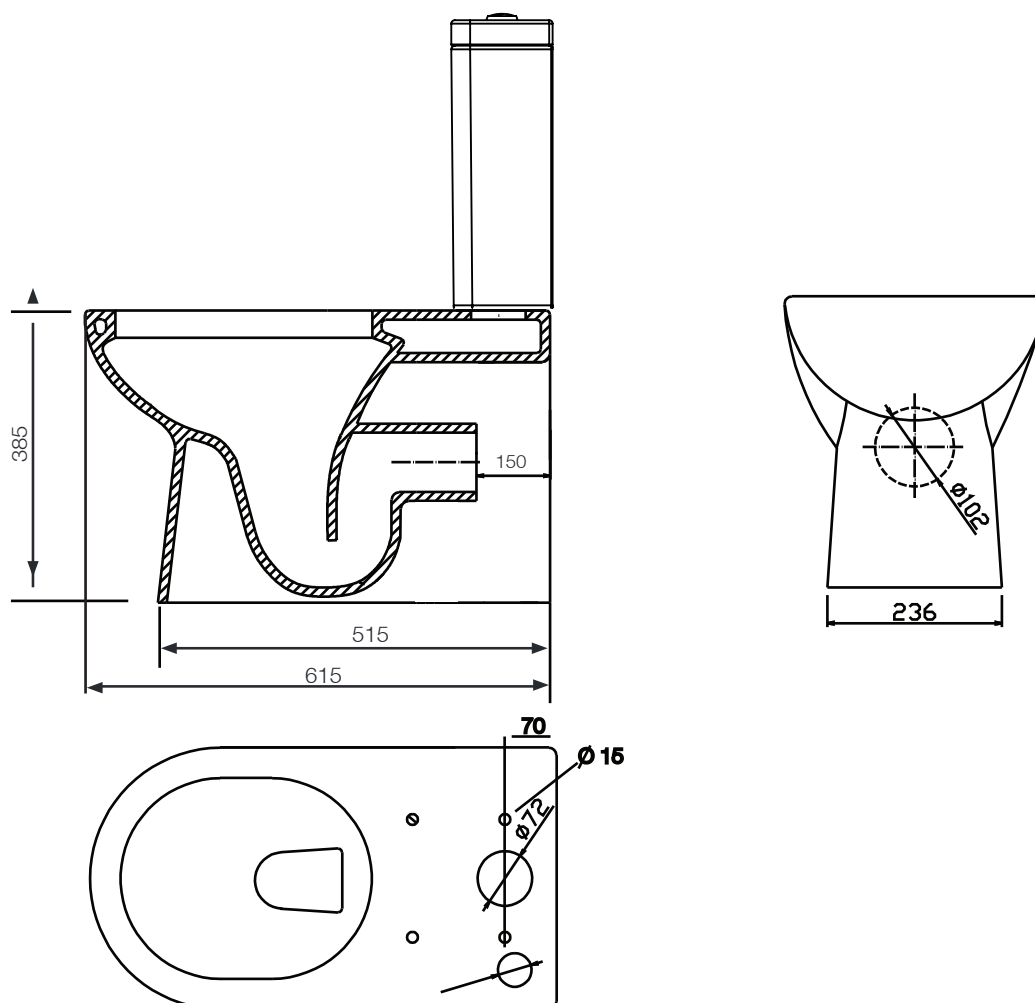
No.	Description	Product Code	Fixings included	Gross Weight
1	Cistern inc. Flush Fitting & Lid	C900S	Yes	11.4kg
2	Fully Back to Wall Close Coupled Pan	WH100S	Yes	14.3kg
3	Ion Soft Close Seat	TS150S	Yes	2.5kg



DIAGRAMS NOT TO SCALE
ALL DIMENSIONS IN MM

FOR DIMENSIONS FOR TS100WSC PLEASE SEE OVERPAGE (BTWC100S)

TOLERANCE OF ± 5 MM



FAQ's

What side is the inlet located? Right hand side

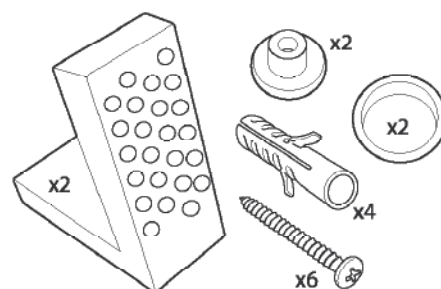
Can this pan be used with a side connection outlet pipe? NO

No.	Description	Product Code	Fixings included	Gross Weight
1	Ion Cistern inc. Flush Fitting & Lid	C150S	Yes	14.3kg
2	Ion Soft Close Toilet Seat	TS150S	Yes	2.5kg
3	Ion Comfort Height WC Pan	PC150S	Yes	25.5kg



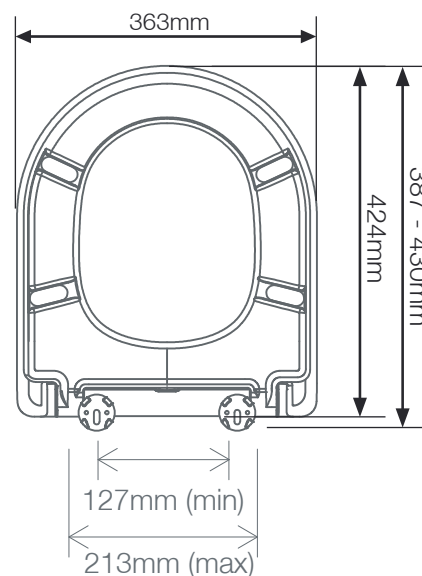
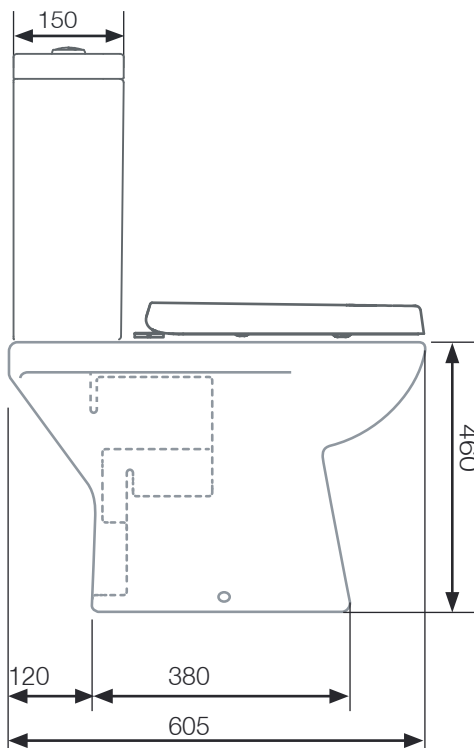
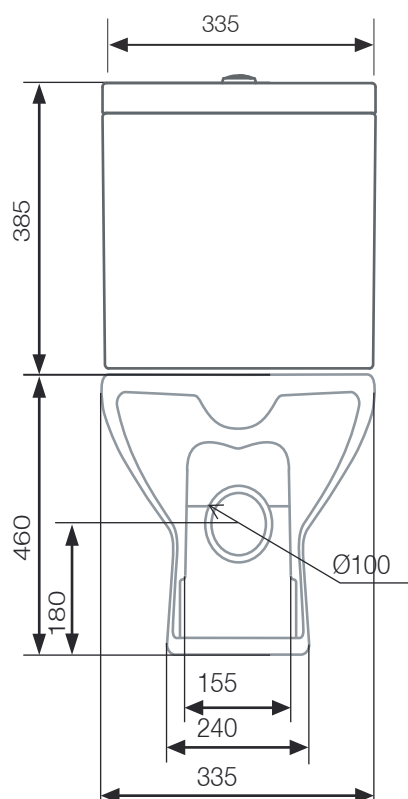
Cistern Settings:
Full Flush Volume: 6L
Reduced Flush Volume: 4L

Floor Fixing Kit:



DIAGRAMS NOT TO SCALE
ALL DIMENSIONS IN MM

TOLERANCE OF ± 5MM



FAQ's

What side is the inlet located? Right hand side

Are there any other compatible seats? No

Can this pan be used with a side connection outlet pipe? Yes

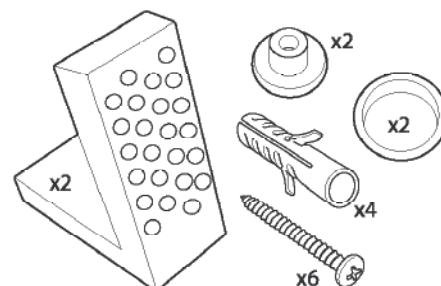
The cistern lid won't shut/the cistern isn't working correctly. **Ensure the inlet and flush valves are set to the correct heights.** See "Cistern Settings" above.

No.	Description	Product Code	Fixings included	Gross Weight
1	Ion Soft Close Toilet Seat	TS150S	Yes	2.5kg
2	Micra Back to Wall Pan	BTW100S	Yes	20.45kg



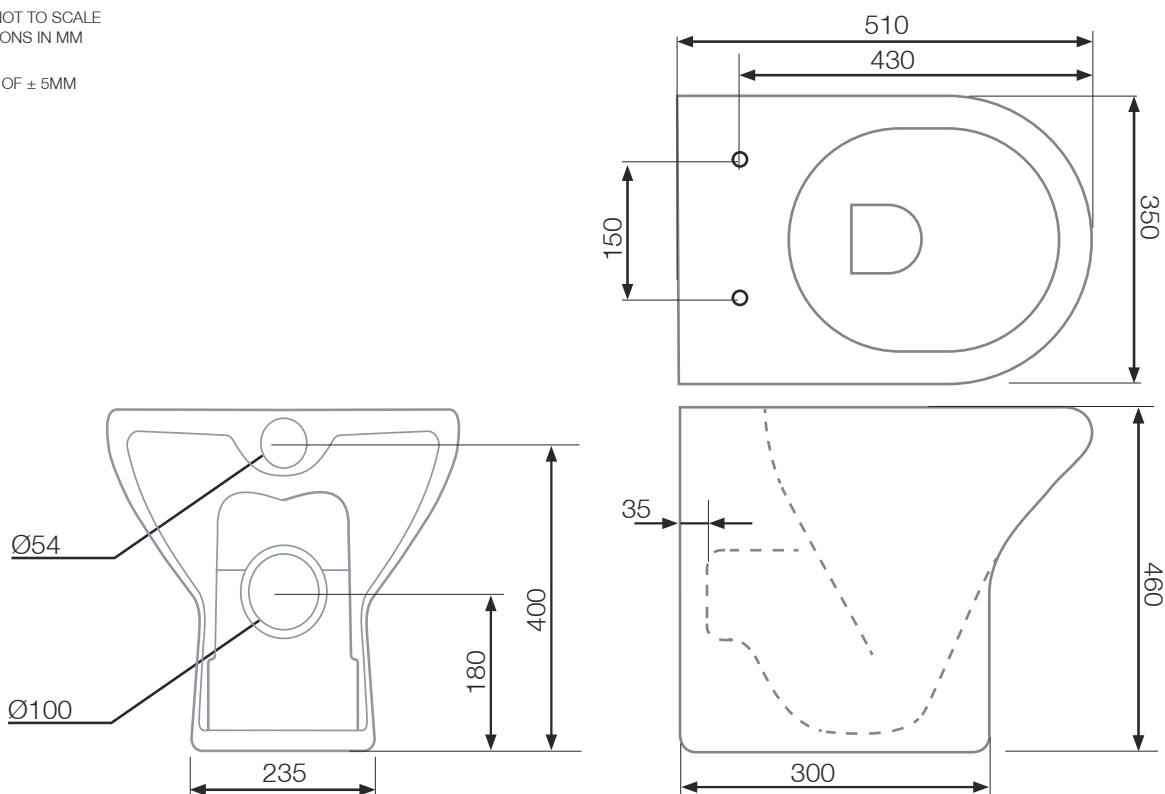
Cistern Settings:
Full Flush Volume: 6L
Reduced Flush Volume: 4L

Floor Fixing Kit:



DIAGRAMS NOT TO SCALE
ALL DIMENSIONS IN MM

TOLERANCE OF ± 5 MM



FAQ's

What side is the inlet located? Right hand side
Can this pan be used with a side connection outlet pipe? No
Are there any other compatible seats? No

Extra Dimensions

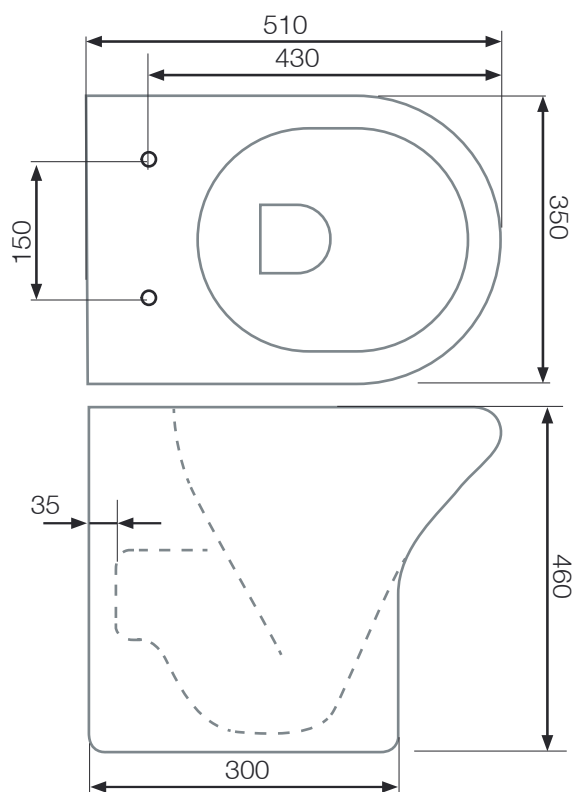
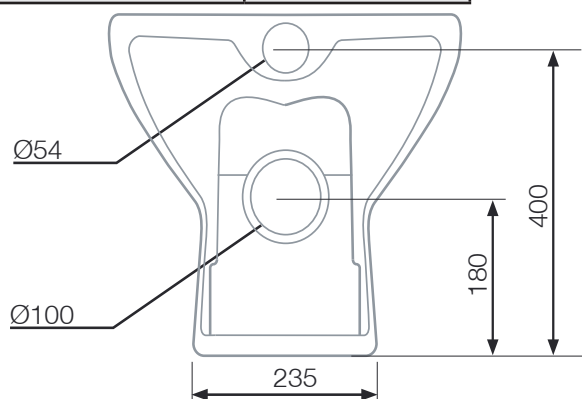
Central Footprint Width = 230mm
Front Footprint Width = 190mm
Height of inlet centre to floor = 400mm
Pan Hole Front to Back = 330mm
Pan Hole Width = 265mm
Belly = 140mm

No.	Description	Product Code	Fixings included	Gross Weight
1	Comfort BTW Pan	BTWC100S	Yes	25.5kg
2	Ion Soft Close Seat	TS150S	Yes	2.5kg



DIAGRAMS NOT TO SCALE
ALL DIMENSIONS IN MM

Dimension	Measurement
Lid Front to Back	430mm
Lid Left to Right	350mm
Ring Hole Front to Back	280mm
Ring Hole Left to Right	225mm
Seat Overall Thickness	30mm
Width of Back of Seat	350mm
Min/Max Adjustment for Fixings	60/165mm



FAQ's

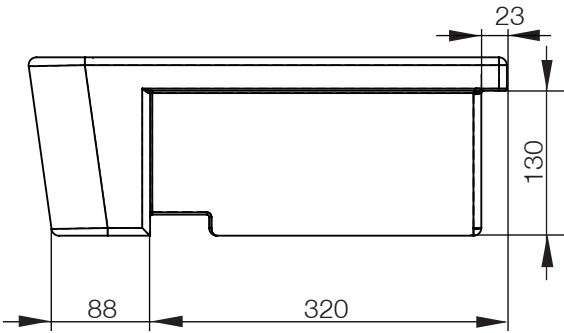
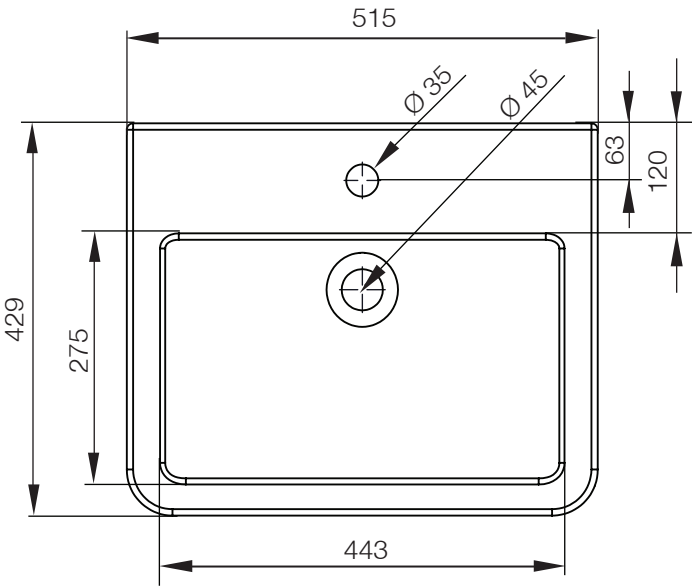
What side is the inlet located?
Can this pan be used with a side connection outlet pipe?
Are there any other compatible seats?

Extra Dimensions
Central Footprint Width = 230mm
Front Footprint Width = 190mm
Height of inlet centre to floor = 400mm
Pan Hole Front to Back = 330mm
Pan Hole Width = 265mm
Belly = 140mm

No.	Description	Product Code	Fixings included	Gross Weight
1	SCT Basin STD Depth	SCSB930S	Yes	15.25kg



DIAGRAMS NOT TO SCALE
ALL DIMENSIONS IN MM
TOLERANCE OF ± 5 MM

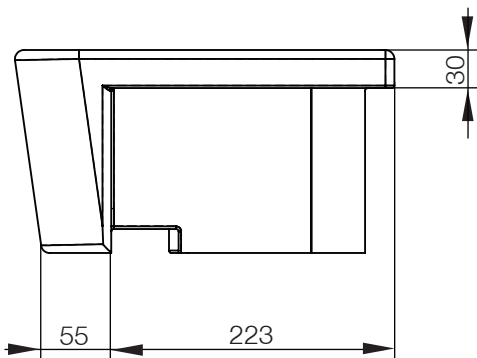
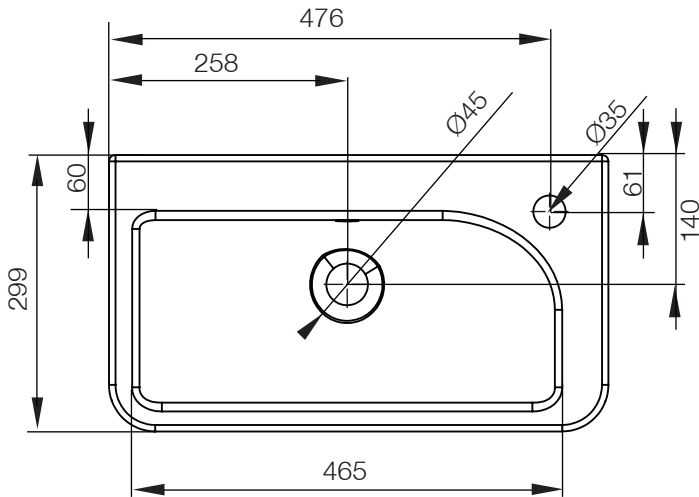


FAQ's
How much water does this basin hold? 5 Litres
Is there a cutting template supplied? Yes.

No.	Description	Product Code	Fixings included	Gross Weight
1	SCT Basin Slim Depth	SCSB920S	Yes	12.8kg



DIAGRAMS NOT TO SCALE
ALL DIMENSIONS IN MM
TOLERANCE OF ± 5 MM



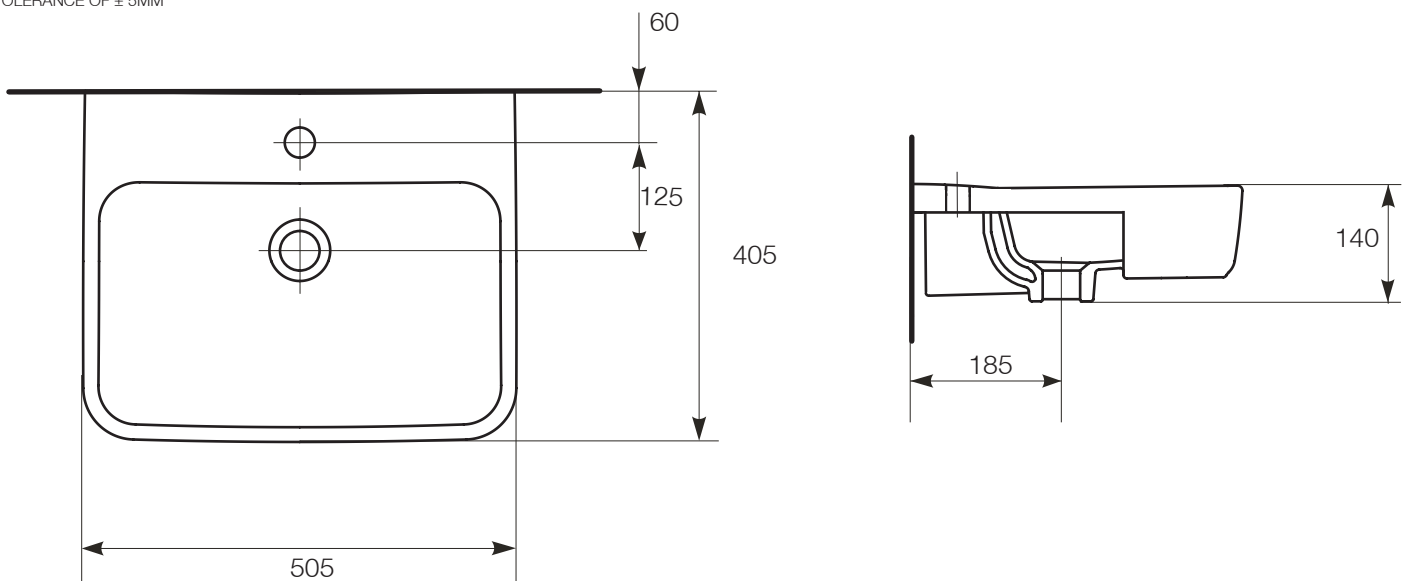
FAQ's

How much water does this basin hold? 3 Litres
Is there a cutting template supplied? Yes.

No.	Description	Product Code	Fixings included	Gross Weight
1	Standard Depth 500 SCT Basin	G3SCBAS50	Yes	11.3kg



DIAGRAMS NOT TO SCALE
ALL DIMENSIONS IN MM
TOLERANCE OF ± 5 MM



FAQ's

Does the basin have an overflow? Yes, integrated.

What is the water depth (to the overflow)? 44mm.

Is there a cutting template supplied? Yes.