

## CABINETS & MIRRORS

---

Complete your bathroom with a stylish cabinet or mirror from our design-led collection. Using a cabinet can help create a calm, clutter-free space. Choosing an illuminated mirror will help will enlarge even the smallest of spaces, reflecting light and brightening your day. A host of useful features such as Bluetooth® wireless technology, heated demister pads and integrated recharging sockets will make you wonder how you ever managed without.



A deluxe recessible cabinet offering lots of luxurious yet practical features. Bright LED lighting operated by infrared sensor and a concealed recharging socket make Nook a cabinet that fits any bathroom style.

**NOOK**



**Nook Single Door Cabinet  
with Integrated LED Lighting**

Aluminium  
500(w) x 700(h) x 117(d)mm

NO50AL

£620.00



**Nook Double Door Cabinet  
with Integrated LED Lighting**

Aluminium  
650(w) x 700(h) x 117(d)mm

NO65AL

£705.00

## FEATURES

### Recessible or Surface Mounted

Nook cabinets have the option of being surface mounted or recessed into a wall for a sleek contemporary look.

### Energy Saving Functional Lighting

With integrated diffused LED lighting around the frame, Nook cabinets create a bright practical light.

### Recharging Socket

Nook cabinets also feature a highly useful concealed recharging socket.

### Anodised Aluminium Construction

Solid, robust aluminium-bodied construction makes your Nook cabinet hardwearing, rust proof and easy to maintain.

### IP44

Our cabinets have been designed and independently tested for compliance with electrical equipment (safety) regulations. Cabinets which are IP44 water resistance rated are suitable for use in zones 2 and outside zones in the bathroom. Please see the diagram on page 233 which illustrates zones within a standard bathroom.



Surface Mounted



Recessed



As the name implies, Slek cabinets have minimalist styling with side illumination, creating a simple contemporary look. A concealed recharging socket also adds to its practicality.

**SLEEK**



**Sleek Single Door Cabinet  
with Integrated LED Lighting**

Aluminium  
490(w) x 650(h) x 136(d)mm

SL44AL

£303.00



**Sleek Double Door Cabinet  
with Integrated LED Lighting**

Aluminium  
650(w) x 650(h) x 136(d)mm

SL60AL

£372.00



## FEATURES

### Energy Saving Functional Lighting

With integrated diffused LED lighting on the sides, Sleek cabinets produce useful task lighting.

### Recharging Socket

Sleek cabinets feature a highly useful recharging socket, suitable for electric shavers and toothbrushes, conveniently hidden away in the cabinet.

### Adjustable Shelves

Sleek cabinets have two adjustable shelves, providing ample storage for all your bathroom products.

### Anodised Aluminium

Solid, robust aluminium-bodied construction makes your Sleek cabinet hard wearing rust proof and easy to maintain.

### IP44

Our cabinets have been designed and independently tested for compliance with electrical equipment (safety) regulations. Cabinets which are IP44 water resistance rated are suitable for use in zones 2 and outside zones in the bathroom. Please see the diagram on page 233 which illustrates zones within a standard bathroom.



With its overhead energy saving led lighting, soft close mirror doors and plenty of storage space the conduct cabinet range is simple and yet super stylish.

# CONDUCT



**Conduct Single Door Cabinet  
with Integrated LED Lighting**

Aluminium  
440(w) x 650(h) x 130(d)mm

CO44AL	£220.00
--------	---------



**Conduct Double Door Cabinet  
with Integrated LED Lighting**

Aluminium  
600(w) x 650(h) x 130(d)mm

CO60AL	£287.00
--------	---------



## FEATURES

### Energy Saving Functional Lighting

Conduct cabinets feature overhead lighting operated by a rocker switch. Energy efficient diffused LEDs create bright, stunning illumination.

### Adjustable Shelves

Conduct cabinets are supplied with two adjustable shelves, providing ample storage for all your bathroom products.

### Anodised Aluminium Construction

Solid, robust aluminium-bodied construction makes your Conduct cabinet hardwearing, rust proof and easy to maintain.

### IP44

Our cabinets have been designed and independently tested for compliance with electrical equipment (safety) regulations. Cabinets which are IP44 water resistance rated are suitable for use in zones 2 and outside zones in the bathroom. Please see the diagram on page 233 which illustrates zones within a standard bathroom.





Sleek, aluminium cabinets with integrated fluorescent lighting and soft close doors. The perfect storage solution for the modern bathroom..

**IDEA**





**Idea Single Door Cabinet  
with Integrated Lighting**

Aluminium  
507(w) x 706(h) x 142(d)mm

ID50AL £595.00



**Idea Double Door Cabinet  
with Integrated Lighting**

Aluminium  
610(w) x 706(h) x 142(d)mm

ID60AL £705.00



## FEATURES

### Infrared On/off Switch

A safe and easy to use infrared on/off switch allows you to activate the lighting without touch. Simply move your hand in front of the sensor.

**Important** - all cabinets featuring infrared technology must be mounted a minimum of 150mm from an adjacent wall or obstruction to ensure correct function of the infrared sensor. See page 233 for electrical specifications.

### Recharging Socket

These cabinets feature an internal power socket for electric shavers and toothbrushes. The socket can be operated independently to the lights.

### Glass Shelves

Idea cabinets are supplied with three adjustable glass shelves, providing ample storage for all your bathroom products.

### Anodised Aluminium Construction

Solid, robust aluminium-bodied construction of your Idea cabinet makes it hardwearing, rust proof and easy to maintain.



### Integrated Fluorescent Lighting

Cleverly designed integrated fluorescent lighting is featured down each side of the cabinet, providing useful task lighting as well as illuminating inside the cabinet when the doors are open. 2x 15w lamps.



Sleek aluminium cabinets with soft close doors.  
Available in single and double door options.

**MOVE**


**Move Single Mirror Door Cabinet**

Aluminium

482(w) x 700(h) x 120(d)mm

MO48AL

£259.00


**Move Double Mirror Door Cabinet**

Aluminium

580(w) x 700(h) x 120(d)mm

MO58AL

£303.00



## FEATURES

**Slim Profile**

At just 120mm in depth, Move cabinets help save on space in your bathroom.

**Soft Close Doors**

The soft close dampers on Move cabinet doors allow for smooth, quiet closure.

**Anodised Aluminium Construction**

Solid, robust aluminium-bodied construction of your Move cabinet makes it hardwearing, rust proof and easy to maintain.


**Glass Shelves**

Move cabinets are supplied with two adjustable glass shelves, providing ample storage for all your bathroom products.



Sometimes simple is best. Balance aluminium cabinets feature soft close doors and are available in both single and double door options.

# BALANCE

**Balance Single Mirror Door Cabinet**

Aluminium

440(w) x 650(h) x 130(d)mm

BA44AL

£175.50

**Balance Double Mirror Door Cabinet**

Aluminium

600(w) x 650(h) x 130(d)mm

BA60AL

£241.50



## FEATURES

**Soft Close Hinges**

The soft close dampers on Balance cabinet doors allow for smooth, quiet closure.

**Anodised Aluminium Construction**

Solid, robust aluminium-bodied construction of your Balance cabinet makes it hardwearing, rust proof and easy to maintain.

**Adjustable Shelves**

Balance cabinets are supplied with two adjustable shelves, providing ample storage for all your bathroom products.



Observe will complement your Courier or Swift furniture perfectly. Available in two finishes with a matching internal shelf and soft close doors.

**OBSERVE**



**Observe Cabinet with Double Mirror Door**  
Gloss White  
600(w) x 650(h) x 115(d)mm

OB60W £169.50



**Observe Cabinet with Double Mirror Door**  
Montana Gloss  
600(w) x 650(h) x 115(d)mm

OB60M £169.50



## FEATURES

### Soft Close Hinges

The soft close dampers on Observe cabinet doors allow for smooth, quiet closure.

### Finish Options

Available in both white and montana gloss finishes, Observe double door cabinets will coordinate perfectly with your Tavistock furniture.

### Matching Internal Shelves

The fixed shelf on this range matches the carcass of the cabinet.



### Coordinating Furniture

The Observe cabinet perfectly coordinates with the Courier & Swift furniture ranges. See pages 50 - 55 for the Courier collection and pages 68 - 71 for the Swift collection.





High gloss white finish cabinets with soft close doors.  
Available in single or double door formats.

**DETAIL**

**Detail Single Mirror Door Cabinet**

Gloss White

475(w) x 650(h) x 130(d)mm

DE47W

£165.00

**Detail Double Mirror Door Cabinet**

Gloss White

600(w) x 650(h) x 130(d)mm

DE60W

£208.00



## FEATURES

**Soft Close Doors**

The soft close dampers on Detail cabinet doors allow for smooth, quiet closure.

**Glass Shelves**

Detail cabinets are supplied with two adjustable glass shelves, providing ample storage for all your bathroom products.

**Coordinates with Furniture**

The Detail cabinet perfectly coordinates with all the Tavistock gloss white furniture ranges. See pages 8-81 for all furniture.

## MIRRORS



# FEATURES



## Bluetooth® Wireless Technology

Integrate music seamlessly into your bathroom with an LED illuminated mirror with **Bluetooth®** wireless technology



## Heated Demister Pads

Heated demister pads heat the mirror to a few degrees above room temperature within 2-3 minutes, preventing the mirror from misting in even the steamiest of bathrooms.



## Tapered Body

Our mirrors with a tapered body profile have an elegant slimline look which makes them appear to float on the wall.



## LED Lighting

We use latest LED technology in many of our mirrors to great effect. This not only looks stunning but provides a bright, practical task light with energy saving benefits.



## Recharging Socket

An integrated recharging socket, suitable for electric shavers and toothbrushes.



## Magnifying Glass

A useful illuminated magnifying mirror, which magnifies objects to double their size, is great for shaving and applying make-up.



## Infrared On/off Switch

A safe and easy to use infrared on/off switch lets you activate lighting without the need to touch the mirror. Simply move your hand in front of the sensor to activate.

**Important:** When mounting mirrors with infrared switches, the sensor must be at least 150mm from an adjacent wall or obstruction to ensure the switch can function properly.



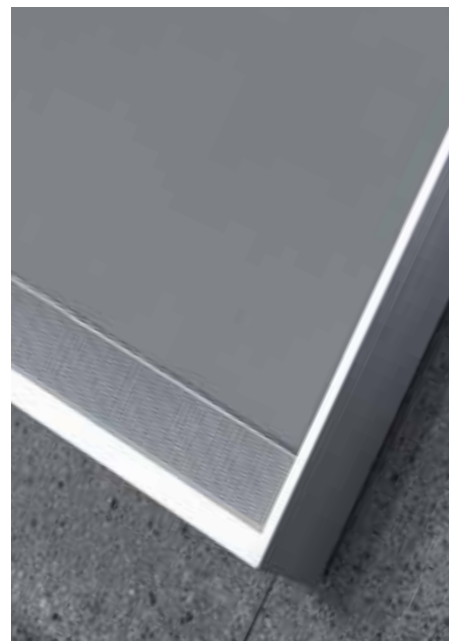
## Ambient Lighting

For additional mood lighting in the bathroom, stunning effects are created with ambient lighting.

## IP44

Our mirrors have been designed and independently tested for compliance with electrical equipment (safety) regulations. Mirrors which are IP44 water resistance rated are suitable for use in zones 2 and outside zones in the bathroom. Please see the diagram on page 233 for further information.

# MUSIC MIRROR



## Pitch Mirror with *Bluetooth®*

### Wireless Technology

Integrate music seamlessly into your bathroom with the Pitch LED Mirror, equipped with **Bluetooth®** wireless technology & integrated stereo speakers. Easy to use, simply pair with your **Bluetooth®** enabled mobile or tablet, then use your device to control your choice of music.

- **Bluetooth®** wireless technology
- Integrated stereo speakers
- Bright practical, energy saving LED lighting
- Heated demister pad prevents mirror steaming up
- Infrared on/off sensor to operate lighting and heated demister pad
- IP44 rated - for safe use in the bathroom

### Pitch Illuminated Mirror

500(w) x 700(h) x 53(d)mm

SLE530

£431.00





## SLIM DEPTH MIRRORS



### Aster LED Illuminated Mirrors

A slim LED illuminated mirror, available in 3 sizes to suit any bathroom.

- Slim design
- Bright practical, energy saving LED lighting
- Heated demister pad prevents mirror steaming up
- Infrared on/off sensor to operate lighting and heated demister pad
- Can be hung portrait or landscape
- IP44 rated - for safe use in the bathroom

#### Aster 700mm Mirror

500(w) x 700(h) x 25(d)mm

AS70AL	£363.00
--------	---------

#### Aster 800mm Mirror

600(w) x 800(h) x 25(d)mm

AS80AL	£389.00
--------	---------

#### Aster 1200mm Mirror

1200(w) x 500(h) x 25(d)mm

AS120AL	£499.00
---------	---------





## SLIM DEPTH MIRRORS



### Pride LED Illuminated Mirror

600(w) x 810(h) x 30(d)mm

Features: Energy efficient LED lighting, Heated demister pad, Infrared sensor, IP44, Can be hung portrait or landscape

SLE570

£372.00



### Reform LED Illuminated Mirror

500(w) x 700(h) x 30(d)mm

Features: Energy efficient LED lighting, Heated demister pad, Infrared sensor, Ultra slim tapered body, IP44, Can be hung portrait or landscape

SLE540

£350.00



### Appeal LED Illuminated Mirror

900(w) x 600(h) x 30(d)mm

Features: Energy efficient LED lighting, Heated demister pad, Infrared sensor, Ultra slim tapered body, IP44, Can be hung portrait or landscape

SLE550

£396.00



### Drift LED Illuminated Mirror

1200(w) x 500(h) x 30(d)mm

Features: Energy efficient LED lighting, Heated demister pad, Infrared sensor, Ultra slim tapered body, IP44, Can be hung portrait or landscape

SLE560

£465.00

# ILLUMINATED MIRRORS



**Core LED Illuminated Mirror**

550(w) x 700(h) x 50(d)mm

Features: Energy efficient LED lighting, Heated demister pad, Rocker switch, IP44, Can be hung portrait or landscape

SLE500

£267.00



**Diffuse LED Illuminated Mirror**

530(w) x 730(h) x 40(d)mm

Features: Energy efficient LED lighting, Heated demister pad, Infrared sensor, IP44, Can be hung portrait or landscape

SLE520

£217.50



**Transmit LED Illuminated Mirror**

450(w) x 700(h) x 40(d)mm

Features: Energy efficient LED lighting, Heated demister pad, Infrared sensor, IP44, Can be hung portrait or landscape

SLE510

£205.50

# ILLUMINATED MIRRORS



## Refraction LED Illuminated Mirror

530(w) x 730(h) x 40(d)mm

Features: Ambient lighting, Heated demister pad, Infrared sensor, IP44, Can be hung portrait or landscape

SLE410

£373.00



## Momentum LED Illuminated Mirror

450(w) x 700(h) x 40(d)mm

Features: Ambient lighting, Heated demister pad, Infrared sensor, IP44

SLE400

£342.00



## Vapour Illuminated Mirror

600(w) x 800(h) x 50(d)mm (40 watts)

Features: Magnifying mirror, Recharging socket, Heated demister pad, Infrared sensor, IP44, Can be hung portrait or landscape

SBL16

£401.00



## Equalise Illuminated Mirror

600(w) x 800(h) x 50(d)mm (40 watts)

Features: Tapered body, Recharging socket, Heated demister pad, Infrared sensor, IP44, Can be hung portrait or landscape

SBL17

£406.00

# ILLUMINATED MIRRORS



**Transform Illuminated Mirror**  
600(w) x 800(h) x 50(d)mm (40 watts)  
Features: Ambient lighting, Heated demister pad,  
Infrared sensor, IP44, Can be hung portrait or landscape

SBL10 £342.00



**Align Illuminated Mirror**  
450(w) x 700(h) x 40(d)mm (2 x 13watts)  
Features: Rocker switch, IP44, Can be hung portrait or landscape

SBL15 £183.50